

# Prognostic value of coronary artery calcium score in patients with symptoms suggestive of coronary artery disease

Results from the Silesian Calcium Score (SILICAS) study

Zofia Parma<sup>1</sup>, Radosław Parma<sup>2</sup>, Jan Brzoska<sup>3</sup>, Maciej Sosnowski<sup>1,3</sup>

<sup>1</sup> 3rd Department of Cardiology, School of Medicine in Katowice, Medical University of Silesia, Katowice, Poland

<sup>2</sup> Upper-Silesian Center of Cardiology, Independent Public Clinical Hospital of the Medical University, Katowice, Poland

<sup>3</sup> Diagnostic Imaging Unit, Upper-Silesian Center of Cardiology, Independent Public Clinical Hospital of the Medical University of Silesia, Katowice, Poland

## KEY WORDS

coronary artery disease, coronary calcium score, prognosis

## ABSTRACT

**INTRODUCTION** The prognostic value of coronary artery calcium score (CACS) in symptomatic patients with a suspicion of coronary artery disease (CAD) has been poorly defined.

**OBJECTIVES** The aim of the study was to assess the predictive value of the CACS in the incidence of major adverse coronary events (MACEs) in patients with an intermediate probability of CAD and establish its usefulness as the first-line risk assessment tool.

**PATIENTS AND METHODS** This single-center, observational, prospective study enrolled consecutive symptomatic patients without a previous diagnosis of CAD, referred to our center for CACS assessment with non-contrast-enhanced cardiac computed tomography (CT). CACS measurements were performed using an electrocardiogram-gated 64-row CT scanner. The CACS measurement was treated as the first-line noninvasive test. Patients with positive CACS values were divided into 4 subgroups: <100 Agatston units (AU), 100 to 399 AU; 400 to 999 AU; and ≥1000 AU. The incidence of MACEs was analyzed in 2 ways: negative versus positive CACS and by the CACS subgroups.

**RESULTS** We included 588 patients (mean age, 61.1 ± 9.7 years; women, 64%). The median follow-up period was 707 days. There were 239 patients (49.3%) with no coronary calcium. In these patients, no MACEs were observed, while in those with positive CACS values, they occurred in 108 patients (30.9%) ( $P < 0.001$ ). The incidence of MACEs was dependent on the CACS values, reaching 91% in those with a CACS of 1000 or higher AU.

**CONCLUSIONS** In selected symptomatic patients with an intermediate probability of CAD, the CACS measurement may be used as the first-line test to assess the risk of MACEs.

## Correspondence to:

Zofia Parma, MD, Klinika Kardiologii,  
III Katedra Kardiologii,  
Śląski Uniwersytet Medyczny,  
ul. Ziolowa 45-47, 40-635 Katowice,  
Poland, phone: +48 32 252 39 30,  
e-mail: zofia.parma@gmail.com

Received: April 4, 2016.

Revision accepted: May 24, 2016.

Published online: June 20, 2016.

Conflict of interest: none declared.

Pol Arch Med Wewn. 2016;

126 (6): 395-401

doi:10.20452/pamw.3443

Copyright by Medycyna Praktyczna,

Kraków 2016

**INTRODUCTION** Atherosclerosis, in which a degenerative-inflammatory process leads to the development of plaques gradually infiltrated with calcium, is the cause of most cases of coronary artery disease (CAD). The presence of coronary calcifications well reflects the extent of the atherosclerotic process.<sup>1-4</sup> Calcium deposits may be a component of both critically stenosed and non-obstructive plaques. High numerical values of the coronary artery calcium score (CACS) are usually present in subjects with high-grade coronary

lesions, but may also be found in individuals with extensive atherosclerosis but no critical coronary stenosis. On the other hand, noncalcified plaques may be present, especially in younger subjects, and may be prone to rupture.<sup>4-7</sup>

The predictive role of CACS for cardiovascular events in asymptomatic subjects has been well studied.<sup>8-12</sup> In this group, the absence of coronary calcium identifies the subjects with very low risk of subsequent coronary events,<sup>4,13,14</sup> and a CACS of more than 400 Agatston units (AU) is considered

a CAD equivalent, with a 10-year MACE rate of over 20%.<sup>8</sup> The Screening for Heart Attack Prevention and Education (SHAPE) guidelines proposed to use the CACS value as the basis for risk screening in apparently healthy population of men older than 45 years and women older than 55 years.<sup>15</sup> This approach, however, has not been widely accepted.

In symptomatic subjects, the role of calcium scoring is more controversial.<sup>1,16-20</sup> Patients with symptoms suggestive of CAD represent a nonuniform group, for whom confirmation or exclusion of CAD diagnosis and assessment of the risk of cardiac events are of key importance for the choice of a management strategy. Classic risk factors, including age, sex, arterial hypertension, smoking, and dyslipidemia, serve as the basis for the most popular risk calculators, such as the Framingham scale<sup>20</sup> and SCORE.<sup>21</sup> Those scales are useful for cardiovascular risk assessment but have important limitations. A substantial proportion of patients at risk of cardiovascular events cannot be identified using the classic risk factors. In addition, in young and middle-aged subjects, the risk of cardiovascular events is low even in the presence of several risk factors, while in the elderly population, a small change in the risk profile may have major prognostic implications.<sup>22</sup>

Currently, the calcium score measurement is not included in the diagnostic algorithm in patients with suspected CAD.<sup>23</sup> However, some studies suggest that CACS may provide more valuable diagnostic and prognostic information than that obtained from exercise testing and single-photon emission computed tomography (CT).<sup>18</sup> On the other hand, other data indicate that up to 20% of symptomatic patients with a negative CACS value may have obstructive coronary lesions.<sup>16</sup> Therefore, the use of coronary calcium scoring in this setting remains controversial and requires further research.

The primary objective of the SILICAS study was to assess the predictive value of coronary calcium on the major adverse coronary events (MACEs) including cardiac death, nonfatal myocardial infarction (MI), and coronary revascularization, in order to establish its usefulness as the first-line noninvasive test in patients with an intermediate probability of CAD. Secondary objectives included the incidence of cardiac death, MI, percutaneous coronary intervention (PCI), and coronary artery bypass grafting (CABG), as well as the number of coronary angiographies and hospitalizations for stable and unstable angina in relation to the CACS.

**PATIENTS AND METHODS** **Study design and participants** SILICAS was a prospective, single-center observational study, enrolling subsequent patients without a previous diagnosis of CAD, who had symptoms suggestive of CAD and no known coronary anatomy, and were referred by their attending physicians for a CACS examination to the Unit of Noninvasive Cardiovascular Diagnostics

of the Upper-Silesian Center of Cardiology in Katowice, Poland.

Subjects meeting the following criteria were included: male and female subjects aged 18 years or older, symptoms suggestive of CAD, intermediate probability of CAD based on clinical data,<sup>23</sup> no established CAD diagnosis, and a written informed consent to participate in the study. The exclusion criteria were as follows: pregnancy, previous invasive coronary angiography (independent of the result); CT angiography performed at the time of CACS assessment, history of an acute coronary syndrome, history of any coronary revascularization; clinical heart failure (New York Heart Association class >1), clinically relevant structural heart disease, cardiac arrhythmias with potential impact on the interpretation of CACS, other contraindications to CACS measurement, presence of a disease likely to affect medium-term prognosis, and lack of informed consent or inability to provide an informed consent.

Clinical history was obtained and physical examination performed in each patient at the initial visit. All patients were prospectively followed up by telephone interviews, for at least 1 year after CACS measurement. In case of any incident event of interest, patients were examined and all medical records were analyzed.

A written informed consent was obtained at the baseline visit from all subjects included in the study. The study was approved by the Ethics Committee of the Medical University of Silesia.

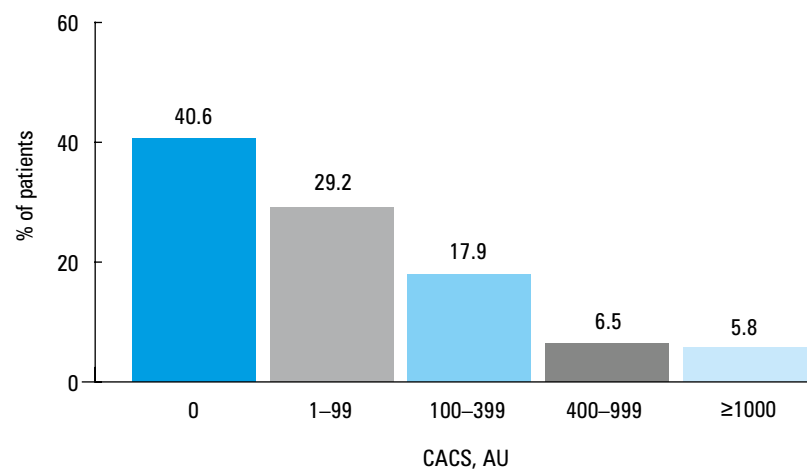
**Computed tomography protocol and data analysis** CACS assessment was performed using a 64-slice CT scanner (Aquilion 64, Toshiba Medical Systems, Tokyo, Japan). A non-contrast-enhanced, prospective, electrocardiogram-gated sequential scan was performed with the following parameters: tube voltage, 120 kV; tube current, 200 mA; rotation time, 350–500 ms; and section width, 2.0 mm. CACS values were determined by 2 experienced physicians blinded to patients' clinical data, using a dedicated work station (Vitrea2, Vital Images, Minnetonka, Minnesota, United States and Advantage, GE Healthcare, Chicago, Illinois, United States). The quantitative CACS values were calculated according to the Agatston method.<sup>24</sup>

**Statistical analysis** Discrete variables were presented as absolute and percent values. Continuous variables were assessed for normal distribution by means of the Shapiro–Wilk test; for the normal distribution, the data were presented as the mean  $\pm$  SD, and for other distributions, as the median  $\pm$  a half of the interquartile gap. The prognostic value of the CACS was assessed using the Cox regression analysis. The initial univariate analysis included all components of the primary endpoint. The hazard ratio and 95% confidence interval was calculated for each variable. The prognostic value of CACS was assessed for the groups with a CACS of 0 and a CACS of 1 or

**TABLE 1** Characteristics of the study group in relation to coronary artery calcium score

Parameter		All patients (n = 588)	CACS = 0 AU (n = 239)	CACS ≥1 AU (n = 349)	P value
age, y, mean ± SD		61.1 ± 9.7	57.18 ± 9.35	63.81 ± 9.04	0.592
sex, n (%)	female	376 (64)	187 (78)	189 (54)	<0.001
	male	212 (36)	52 (22)	160 (46)	<0.001
risk factors, n (%)	hypertension	448 (76)	166 (69)	282 (81)	0.002
	diabetes mellitus	90 (15)	22 (9)	68 (19)	0.001
	hypercholesterolemia	336 (57)	117 (49)	219 (63)	0.001
	smoking (past and present)	126 (21)	45 (19)	81 (23)	0.204
	family history of premature CAD	357 (61)	162 (68)	195 (56)	0.004
	moderate/high physical activity	184 (31)	74 (31)	110 (32)	0.886
	body mass index	28.18 ± 4.14	27.57 ± 4.13	28.61 ± 4.11	0.380

Abbreviations: AU, Agatston unit; CACS, coronary artery calcium score; CAD, coronary artery disease

**FIGURE 1** Distribution of coronary artery calcium score (CACS) thresholds (1–99 Agatston units [AU], 100–399 AU, 400–999 AU, and ≥1000 AU) in the whole study group

higher. In addition, the calculations were performed for the following CACS groups: 1–99 AU, 100–399 AU, 400–999 AU, and ≥1000 AU. Sensitivity and specificity of CACS for the prediction of the primary endpoint was calculated using the receiver-characteristic operating curve method. The level of statistical significance was set at a *P* value of less than 0.05. All data were analyzed by means of the Statistica 7 program (StatSoft, Tulsa, Oklahoma, United States).

### RESULTS Clinical characteristics of the study population

A total of 906 patients were screened, of whom 259 were excluded because of a CT angiogram done together with the CACS evaluation; 31, because of a prior coronary angiography; and 28, due to insufficient medical records. The final study population comprised 588 patients. Their mean age was 61.1 ± 9.7 years, and 36% were male. Arterial hypertension was present in 64%, hyperlipidemia in 57%, diabetes in 15%, and positive family history of CAD in 61% of the patients. In addition, 21% of the patients were current or past smokers, and 69% reported low physical activity. A mean body mass index

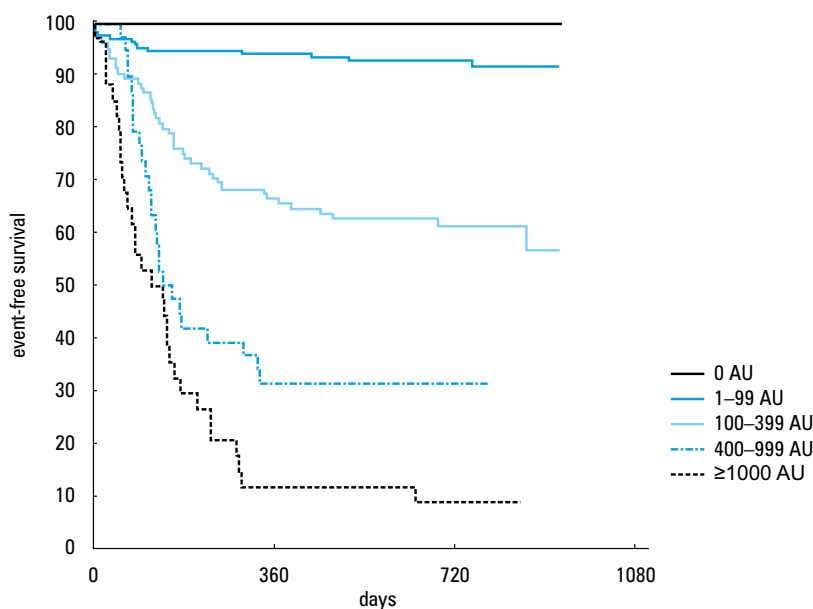
was 28.18 ± 4.14 kg/m<sup>2</sup>. Study group characteristics are presented in [TABLE 1](#).

**Distribution of coronary artery calcium score** In 239 patients (40.6%), no coronary calcifications were observed (CACS = 0 AU), while 349 patients (59.4%) had a CACS of 1 AU or higher. Patients with positive CACS more often had hypertension, diabetes, hypercholesterolemia, and positive history of premature CAD ([TABLE 1](#)). Among patients with positive results, the score was in the range of 1 to 99 AU in 172 patients (49.3%; 29.2% of the entire study group), 100 to 399 AU in 105 patients (30.1%; 17.9%), 400 to 999 AU in 38 patients (10.9%; 6.5%), and ≥1000 AU in 34 patients (9.7%; 5.8%). The distribution of CACS results among the subgroups is presented in [FIGURE 1](#).

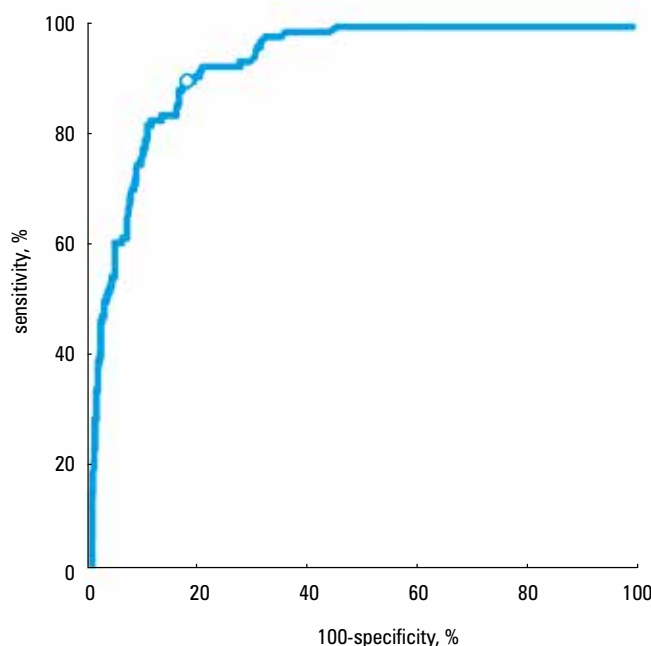
**Radiation exposure** The mean effective radiation dose in our study was 1.32 ± 0.39 mSv (range, 0.48–3.30 mSv).

**Clinical outcomes** Patients were followed up for a mean period of 638 ± 261 days (median, 707; Q1–Q3, 587–826). The primary endpoint,

**FIGURE 2** Kaplan–Meier curves showing survival without major adverse coronary events (composite of cardiac death, nonfatal myocardial infarction, and revascularization) according to coronary artery calcium score (CACS, expressed in Agatston units [AU])



**FIGURE 3** Receiver-operating characteristic curve for the use of coronary artery calcium score (CACS) to predict a primary outcome event. For a CACS of 92 Agatston units (white dot), sensitivity was 90.1%; specificity, 82.6%; and the area under the curve, 0.93.



a composite of death, nonfatal MI, PCI, and CABG, occurred in 108 patients (18.4%). There were no primary endpoint events in patients with a CACS of 0 AU, while in those with a positive CACS, 108 patients (30.9%) experienced MACEs ( $P < 0.001$ ). The incidence of the primary endpoint was dependent on the absolute CACS value. **FIGURE 2** presents the Kaplan–Meier curves for the primary endpoint in the different CACS subgroups ( $P < 0.001$ ).

The ROC statistics showed that the optimal cut-off point for the prediction of the primary endpoint was a CACS of 92 AU (area under the curve [AUC], 0.93; sensitivity, 90.1%; specificity, 82.6%; **FIGURE 3**).

A total of 119 events corresponding to primary endpoint components were recorded: 1 cardiac

death due to MI, 13 nonfatal MIs, 72 PCIs, and 33 CABG procedures. For the 4 subgroups of patients with positive CACS (1–99 AU, 100–399 AU, 400–999 AU, and  $\geq 1000$  AU), an event occurred in 8%, 39%, 68%, and 91% of the patients, respectively. Total and nonfatal MI, PCI, and CABG showed a significant positive relationship with CACS (CACS = 0 vs CACS  $\geq 1$ ;  $P < 0.001$  for all variables; **TABLE 2**).

Only patients with a positive CACS required coronary revascularization during follow-up. In patients with a CACS of less than 100 AU, both PCI and CABG were rarely necessary (7% and <1%, respectively). The need for PCI significantly increased with a CACS of 100 AU or higher (33%, 47%, and 44%, for the CACS cut-off values of 100 AU, 400 AU, and 1000 AU), and for CABG, only

**TABLE 2** Incident primary endpoint component events in relation to the presence of coronary calcification

Event	All patients (n = 588) n (%)	CACS = 0 AU (n = 239) n	CACS ≥1 AU (n = 349) n (%)	P value (CACS = 0 AU vs CACS ≥1 AU)
total events	119 (20.2)	0	119 (34.1)	<i>P</i> <0.001
cardiac death	1 (0.2)	0	1 (0.3)	–
MI (fatal or nonfatal)	14 (2.4)	0	14 (4.0)	<i>P</i> <0.001
PCI	72 (12.2)	0	72 (20.6)	<i>P</i> <0.001
CABG	33 (5.6)	0	33 (9.5)	<i>P</i> <0.001

Abbreviations: CABG, coronary artery bypass grafting; MI, myocardial infarction; PCI, percutaneous coronary intervention; others, see [TABLE 1](#)

for CACS of 1000 AU or higher (6%, 12%, and 50%, respectively).

Hospitalization for unstable angina was necessary in 45 patients (7.7%), and for stable angina, in 107 subjects (18.2%). In both cases, the majority of the events occurred in patients with a CACS of 1 AU or higher: for unstable angina, the distribution was 0.8% vs 28.9% (*P* <0.001) in those with a CACS of 0 AU vs those with a CACS of 1 AU or higher, and for stable angina—2.5% vs 12.3% (*P* <0.01). In the group with a CACS of 0 AU, coronary angiography was performed in 3.3% of the patients, and in those with a CACS of 1 AU or higher—in 45.3% (*P* <0.001).

**DISCUSSION** In a cohort of 588 consecutive patients at an intermediate risk of CAD, presenting with symptoms suggestive of CAD and with no established coronary anatomy, we found that the presence of coronary artery calcium in general, but in particular in the subgroups with incremental CACS values, is an excellent predictor of MACEs at medium term. In our cohort, CACS was treated as the first noninvasive diagnostic test. Any previous noninvasive tests were not taken into consideration.

Notably, in our group, no MACE occurred in patients with a CACS of 0 AU. This is in contrast to the results of the Coronary CT Angiography Evaluation for Clinical Outcomes (CONFIRM) registry,<sup>7</sup> in which symptomatic patients with a CACS of 0 AU had the same MACE rate as those with positive CACS values. It has to be noted, however, that the CONFIRM findings concerned only a small group of patients (1.8%) in whom obstructive coronary lesions were present. The CORE64 study<sup>16</sup> reported a high (19%) proportion of patients with coronary stenosis in the absence of calcium, but their population was different than ours because it only included patients with clinical indications to invasive coronary angiography.

Our findings are compatible with those of Sarwar et al,<sup>14</sup> who reported a low, 1.8% incidence of MACEs during the 42-month follow-up in a large group of symptomatic patients with no coronary calcium. In this group, the relative risk of cardiac events was very low (RR, 0.09; *P* <0.0001) when compared with patients with positive CACS values.

The absence of MACE in our group with a negative CACS can be explained by the age of our population. Noncalcified obstructive or nonobstructive plaques are mostly present in patients younger than 45 years,<sup>5,25</sup> whose contribution to our group was low.

In our study, a CACS of 1 AU or higher was associated with a risk of MACEs. However, only 8% of the patients with a CACS of 1 AU or higher but lower than 100 AU experienced MACEs. We found that in symptomatic subjects, the optimal cut-off value for the prediction of MACE is 92 AU. This is similar to the findings of Keelan et al,<sup>17</sup> who reported a 3-fold increase in the incidence of hard cardiac events in patients with a CACS of more than 100 AU than in those with a CACS of less than 20 AU. Also Schmermund et al<sup>26</sup> found a significant increase in MACEs in symptomatic subjects with CACS exceeding 100 AU.

Traditionally, subjects with a CACS of less than 100 AU, 100–399 AU, and exceeding 400 AU are classified as being at low, intermediate, and high risk, respectively.<sup>12</sup> These values, however, were established for asymptomatic subjects and were based on the diagnostic rather than prognostic predictors.<sup>27</sup>

We confirmed that these strata are similarly useful for risk stratification in symptomatic patients. Our results are in accordance with the data published by Al-Mallah et al,<sup>19</sup> whose study groups had similar characteristics (symptomatic, mean age of 56 years, 50% of men, 56% of patients with a CACS of 0 AU). They found that a CACS exceeding 400 AU improved prediction of hard cardiac events beyond clinical data. In our study, the introduction of an additional stratum with a CACS exceeding 1000 AU enabled the identification of a very high-risk group, with an almost 100% rate of MACE.

Our results indicate that coronary artery calcium scanning is a useful first-choice noninvasive method for risk stratification of symptomatic patients suspected of CAD. The widespread use of this approach is, however, limited by the radiation exposure, availability, and cost. The effective radiation dose with a coronary artery calcium scan should average at about 1.0 to 1.5 mSv, and should not exceed 3.0 mSv, which is less than the amount of radiation received each year from

natural sources.<sup>28</sup> In our study, these standards have been observed. With current technical improvements, radiation exposure during coronary calcium scanning may be as low as that in mammography (0.8 mSv).<sup>8</sup> Still, it should be stressed that this is not always achievable, and even low radiation doses cannot be neglected.<sup>29</sup>

Our study has certain limitations. Because it is a single-center, medium-sized registry, selection bias is likely, despite the inclusion of consecutive patients. Most importantly, however, coronary revascularization procedures, which are a component of MACEs, might have been influenced by the CACS findings. However, other authors also used MACE as the primary endpoint,<sup>7,14</sup> since in the intermediate-risk populations, death and MI rates are low, and the outcome is mostly driven by the need for revascularization.

We conclude that in patients with symptoms suggestive of CAD in whom coronary anatomy is not known, and who belong to the intermediate risk group, the CACS measurement may be considered the first-line test to assess the risk of MACE.

**Contribution statement** MS and ZP contributed to the concept and design of the study. All authors were involved in data collection and analysis. ZP drafted the paper. All authors edited and approved the final version of the manuscript.

**Acknowledgments** The authors would like to thank Professor Michał Tendera for his critical review of the manuscript.

## REFERENCES

- Oudkerk M, Stillman AE, Halliburton SS, et al. Coronary artery calcium screening: current status and recommendations from the European Society of Cardiac Radiology and North American Society for Cardiovascular Imaging. *Eur Radiol.* 2008; 18: 2785-2807.
- McEvoy JW, Blaha MJ, Defilippis AP, et al. Coronary artery calcium progression: an important clinical measurement? A review of published reports. *J Am Coll Cardiol.* 2010; 56: 1613-1622.
- Van Velzen JE, Schuijff JD, de Graaf FR, et al. Diagnostic performance of non-invasive multidetector computed tomography coronary arteriography to detect coronary artery disease using different endpoints: detection of significant stenosis vs. detection of atherosclerosis. *Eur Heart J.* 2011; 32: 637-645.
- Budoff MJ, McClelland RL, Nasir K, et al. Cardiovascular events with absent or minimal coronary calcification: the Multi-Ethnic Study of Atherosclerosis (MESA). *Am Heart J.* 2009; 158: 554-561.
- Sosnowski M, Parma Z, Czekaj A, et al. Traditional risk factors and coronary artery calcium in young adults. *Cardiol J.* 2012; 19: 402-407.
- Sosnowski M, Pysz P, Szymański L, et al. Negative calcium score and the presence of obstructive coronary lesions in patients with intermediate CAD probability. *Int J Cardiol.* 2011; 148: e16-e18.
- Villines TC, Hulten EA, Shaw LJ, et al. Prevalence and severity of coronary artery disease and adverse events among symptomatic patients with coronary artery calcification scores of zero undergoing coronary computed tomography angiography. *J Am Coll Cardiol.* 2011; 58: 2533-2540.
- Hecht HS. Coronary calcium scanning. Past, present, and future. *J Am Coll Cardiol Img.* 2015; 8: 579-596.
- McClelland RL, Jorgensen NW, Budoff M, et al. 10-year coronary heart disease risk prediction using coronary artery calcium and traditional risk factors. *J Am Coll Cardiol.* 2015; 66: 1643-1653.
- Okwuosa TM, Greenland P, Ning H, et al. Distribution of coronary artery calcium scores by Framingham 1-year risk strata in the MESA (Multi-Ethnic Study of Atherosclerosis). *J Am Coll Cardiol.* 2011; 57: 1838-1845.
- Polonsky TS, McClelland RL, Jorgensen NW, et al. Coronary artery calcium score and risk classification for coronary heart disease prediction. *JAMA.* 2010; 303: 1610-1616.
- Erbel R, Mohlenkamp S, Moebus S, et al. Coronary risk stratification, discrimination, and reclassification improvement based on quantification of

subclinical coronary atherosclerosis. The Heinz Nixdorf Recall Study. *J Am Coll Cardiol.* 2010; 56: 1397-1406.

- Hecht HS. A zero coronary artery calcium score: priceless. *J Am Coll Cardiol.* 2010; 55: 1118-1120.
- Sarwar A, Shaw LJ, Shapiro MD, et al. Diagnostic and prognostic value of absence of coronary artery calcification. *JACC Cardiovasc Imaging.* 2009; 2: 675-688.
- Naghavi M, Falk E, Hecht HS, et al. From vulnerable plaque to vulnerable patient. Part III: Executive summary of the screening for heart attack prevention and education (SHAPE) task force report. *Am J Cardiol.* 2006; 98 (Suppl): 2H-15H.
- Gottlieb I, Miller JM, Arbab-Zadeh A, et al. The absence of coronary calcification does not exclude obstructive coronary artery disease or the need for revascularization in patients referred for conventional coronary angiography. *J Am Coll Cardiol.* 2010; 55: 627-634.
- Keelan PC, Bielak LF, Ashai K, et al. Long-term prognostic value of coronary calcification detected by electron-beam computed tomography in patients undergoing coronary angiography. *Circulation.* 2001; 104: 412-417.
- Chang SM, Nabi F, Xu J, et al. Value of CACS compared with ETT and myocardial perfusion imaging for predicting long-term cardiac outcome in asymptomatic and symptomatic patients at low risk for coronary disease. *JACC Cardiovasc Imaging.* 2015; 8: 134-144.
- Al-Mallah MH, Qureshi W, Lin FY, et al. Does coronary CT angiography improve risk stratification over coronary calcium scoring in symptomatic patients with suspected coronary artery disease? Results from the prospective multicenter international CONFIRM registry. *Eur Heart J Cardiovasc Imaging.* 2014; 15: 267-274.
- Wilson PWF, D'Agostino RB, Levy D, et al. Prediction of coronary heart disease using risk factor categories. *Circulation.* 1998; 97: 1837-1847.
- Perk J, De Backer G, Gohlke H, et al. European guidelines on cardiovascular disease prevention in clinical practice. *Eur Heart J.* 2012; 33: 1635-1701.
- Cuende JI, Cuende N, Calaveras-Lagartos J. How to calculate vascular age with the SCORE project scales: a new method of cardiovascular risk evaluation. *Eur Heart J.* 2010; 31: 2351-2358.
- Montalescot G, Sechtem U, Achenbach S, et al. 2013 guidelines on the management of stable coronary artery disease. *Eur Heart J.* 2013; 34: 2949-3003.
- Agatston AS, Janowitz WR, Hildner FJ, et al. Quantification of coronary calcium using ultrafast computed tomography. *J Am Coll Cardiol.* 1990; 15: 827-832.
- Akram K, O'Donnell RE, King S, et al. Influence of symptomatic status on the prevalence of obstructive coronary artery disease in patients with zero calcium score. *Atherosclerosis.* 2009; 203: 533-537.
- Schmermund A, Stang A, Mohlenkamp S, et al. Prognostic value of electron-beam computed tomography-derived coronary calcium scores compared with clinical parameters in patients evaluated for coronary artery disease. *Z Kardiol.* 2004; 93: 696-705.
- Berman DS, Wong ND, Gransar H, et al. Relationship between stress-induced myocardial ischemia and atherosclerosis measured by coronary calcium tomography. *J Am Coll Cardiol.* 2004; 44: 923-930.
- Voros S, Rivera JJ, Berman DS, et al. Guideline for minimizing radiation exposure during acquisition of coronary artery calcium scans with the use of multidetector computed tomography. *J Cardiovasc Comp Tomogr.* 2011; 5: 75-83.
- Fazel R, Krumholz HM, Wang Y, et al. Exposure to low-dose ionizing radiation from medical imaging procedures. *N Engl J Med.* 2009; 361: 847-857.

# Wartość prognostyczna wskaźnika uwapnienia tętnic wieńcowych u objawowych pacjentów z podejrzeniem choroby wieńcowej

Wyniki badania SILICAS (Silesian Calcium Score study)

Zofia Parma<sup>1,2</sup>, Radosław Parma<sup>2</sup>, Jan Brzoska<sup>3</sup>, Maciej Sosnowski<sup>1,3</sup>

1 Klinika Kardiologii, III Katedra Kardiologii, Śląski Uniwersytet Medyczny, Katowice

2 Górnośląskie Centrum Kardiologii, Samodzielny Publiczny Szpital Kliniczny Śląskiego Uniwersytetu Medycznego Nr 7, Górnośląskie Centrum Medyczne, Katowice

3 Zakład Diagnostyki Obrazowej, Górnośląskie Centrum Medyczne, Samodzielny Publiczny Szpital Kliniczny Śląskiego Uniwersytetu Medycznego Nr 7, Katowice

## SŁOWA KLUCZOWE

choroba wieńcowa,  
wartość  
prognostyczna,  
wskaźnik uwapnienia  
naczyń wieńcowych

## STRESZCZENIE

**WPROWADZENIE** Prognostyczna wartość wskaźnika uwapnienia tętnic wieńcowych (*coronary artery calcium score* – CACS) u objawowych pacjentów z podejrzeniem choroby wieńcowej (*coronary artery disease* – CAD) nie została do tej pory jasno określona.

**CELE** Celem pracy było określenie wartości predykcyjnej CACS dla występowania poważnych zdarzeń wieńcowych u pacjentów z pośrednim prawdopodobieństwem CAD oraz ustalenie roli tego wskaźnika jako pierwszorzędowego badania służącego ocenie ryzyka.

**PACJENCI I METODY** To jednośrodkowe, obserwacyjne badanie prospektywne objęło kolejnych objawowych pacjentów bez wcześniejszego rozpoznania CAD, kierowanych do naszego ośrodka w celu oceny CACS za pomocą tomografii komputerowej serca bez użycia kontrastu. Badanie wykonywano przy pomocy 64-rzędowego tomografu z bramkowaniem EKG. CACS traktowano jako wstępne badanie nieinwazyjne. Pacjentów w dodatnim wyniku CACS podzielono na cztery grupy: <100, 100–399, 400–999 oraz ≥1000 jednostek Agatstona (*Agatston units* – AU). Występowanie poważnych zdarzeń wieńcowych analizowano na dwa sposoby: porównując pacjentów z zerowym vs pozytywnym wynikiem CACS oraz porównując częstość występowania poważnych zdarzeń wieńcowych w podgrupach dzielonych wg wartości CACS.

**WYNIKI** Badaniem objęto 588 osób (średnia wieku 61,1 ± 9,7 roku; 64% kobiet). Mediana czasu obserwacji wyniosła 707 dni. U 239 (49,3%) osób nie wykryto obecności wapnia w tętnicach wieńcowych. U tych pacjentów nie obserwowano poważnych zdarzeń sercowych, podczas gdy u osób z dodatnim wynikiem CACS wystąpiły one u 108 (30,9%) osób ( $p < 0,001$ ). Częstość występowania poważnych zdarzeń wieńcowych była zależna od wartości CACS, osiągając 91% u chorych z CACS ≥1000 AU.

**WNIOSKI** U wybranych objawowych pacjentów z pośrednim prawdopodobieństwem CAD pomiary CACS mogą być wykorzystywane jako pierwszorzędowe badanie służące ocenie ryzyka wystąpienia poważnych zdarzeń wieńcowych.

Adres do korespondencji:  
lek. Zofia Parma, Klinika Kardiologii,  
III Katedra Kardiologii,  
Śląski Uniwersytet Medyczny,  
ul. Ziołowa 45-47, 40-635 Katowice,  
tel.: 32 252 39 30,  
e-mail: zofia.parma@gmail.com  
Praca wpłynęła: 04.04.2016.  
Przyjęta do druku: 24.05.2016.  
Publikacja online: 20.06.2016.  
Nie zgłoszono sprzeczności  
interesów.  
Pol Arch Med Wewn. 2016;  
126 (6): 395-401  
doi:10.20452/pamw.3443  
Copyright by Medycyna Praktyczna,  
Kraków 2016