

Supplementary material

Szczepanek E, Kostkiewicz M, Małecka B, et al. Atypical course of infective endocarditis in a patient with complex congenital heart disease, chronic hepatitis B virus infection, and splenic marginal zone lymphoma. *Pol Arch Intern Med.* 2020; 130: 697-699.

doi:10.20452/pamw.15367

Please note that the journal is not responsible for the scientific accuracy or functionality of any supplementary material submitted by the authors. Any queries (except missing content) should be directed to the corresponding author of the article.

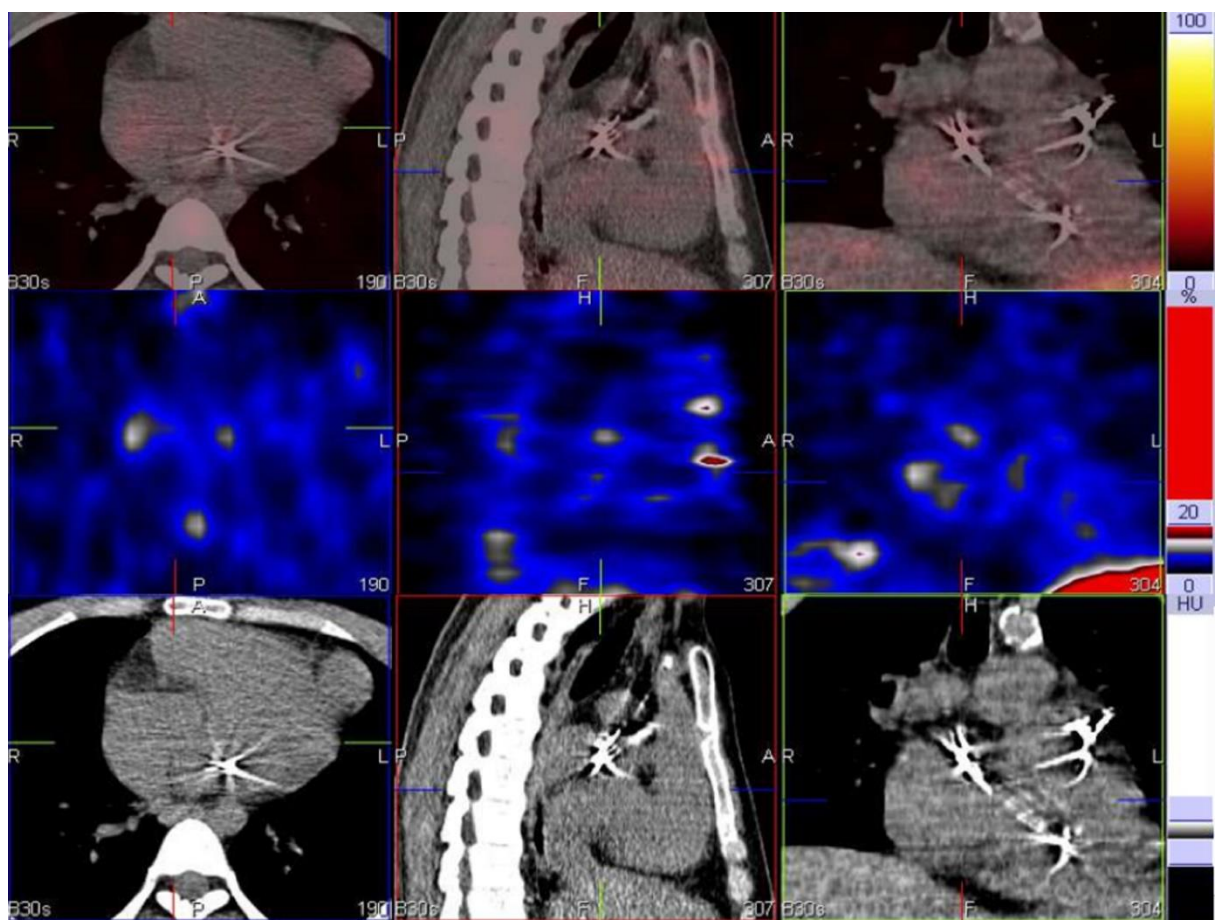


Figure: S1. Scintigraphy findings showing- passively increased collection of marker in scintigraphy (in acquisition after 4 hours) with a decrease in activity in the next reading in the heart cavity- ambiguous image; markedly increased marker collection in the spleen and liver area; infective endocarditis on the electrodes of pacemaker.