

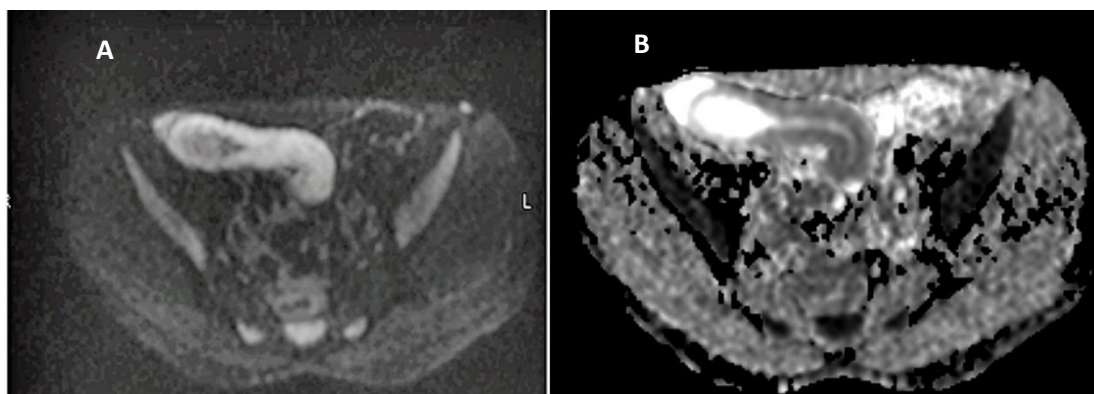
## Supplementary material

---

*Strakšytė V, Kiudelis G, Gineikienė I, et al. Diffusion-weighted magnetic resonance enterocolonography in assessing Crohn disease activity. Pol Arch Intern Med. 2020; 130: 734-740. doi:10.20452/pamw.15487*

Please note that the journal is not responsible for the scientific accuracy or functionality of any supplementary material submitted by the authors. Any queries (except missing content) should be directed to the corresponding author of the article.

## Supplementary material



**Figure S1 A** – axial diffusion-weighted image shows restricted diffusion in the terminal ileum wall (b value of 800 s/mm<sup>2</sup>); **B** – apparent diffusion coefficient map shows that the loop is hypointense compared with the normal bowel. The apparent diffusion coefficient was measured using round region of interest (ROI) that was placed in the area of the most considerable restricted diffusion.