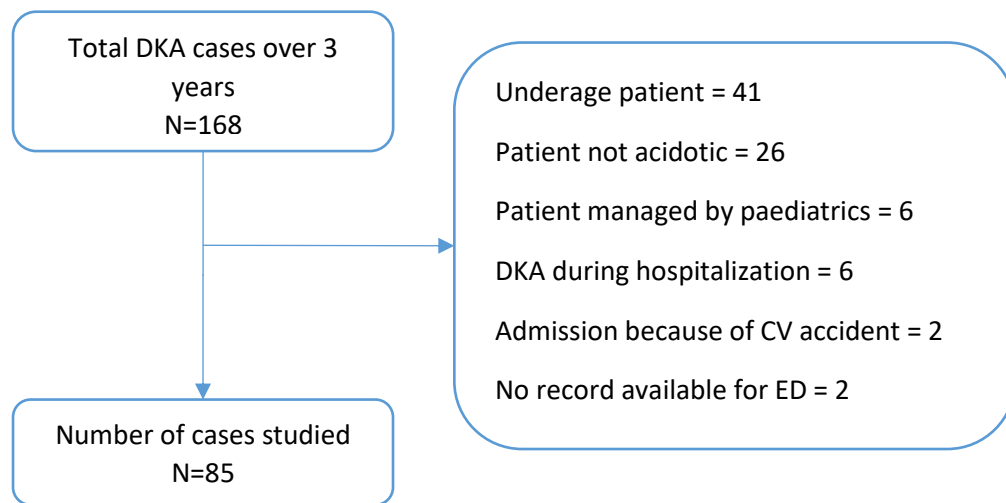


## Supplementary material

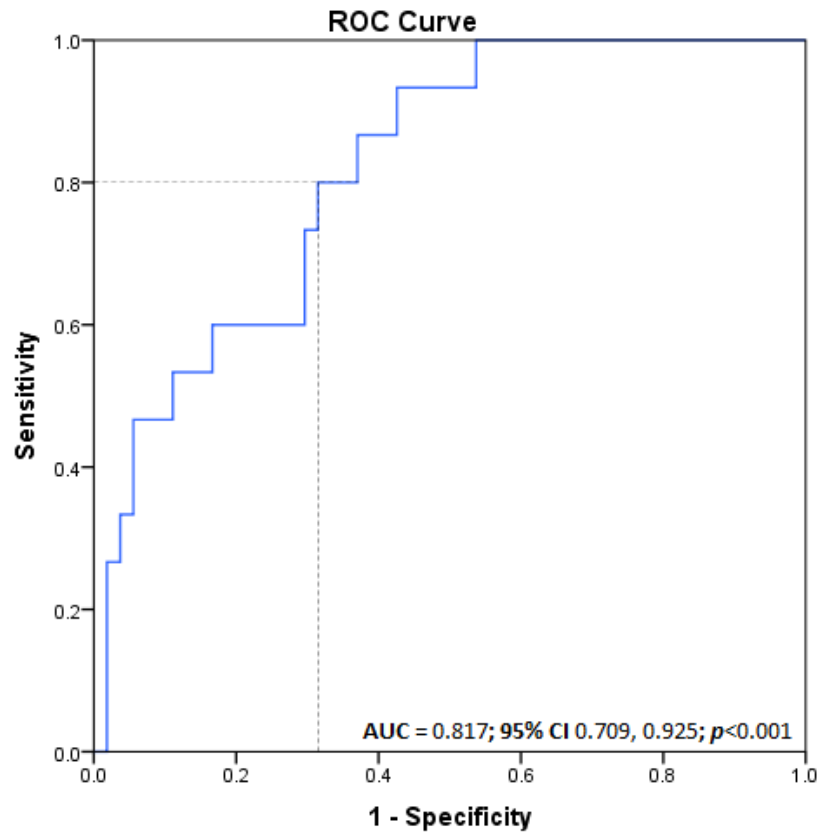
---

Usman A, Mustafa N, Dujaili JA, et al. Prevention of hypokalemia-induced adverse cardiovascular effects in diabetic ketoacidosis: a novel role of the pH-adjusted potassium level. *Pol Arch Intern Med.* 2020; 130: 1118-1121. doi:10.20452/pamw.15634

Please note that the journal is not responsible for the scientific accuracy or functionality of any supplementary material submitted by the authors. Any queries (except missing content) should be directed to the corresponding author of the article.



**Figure S1.** Breakup of cases rejected (N = 83).



**Figure S2.** Receiver operating characteristic curve for probabilities driven from multivariable logistic regression model to predict hypokalemic-electrocardiogram changes.