

Supplementary material

Xu L, Chen G, Liang Y, et al. T helper 17 cell responses induced cardiac hypertrophy and remodeling in essential hypertension. *Pol Arch Intern Med.* 2021; 131: 257-265.

doi:10.20452/pamw.15811

Please note that the journal is not responsible for the scientific accuracy or functionality of any supplementary material submitted by the authors. Any queries (except missing content) should be directed to the corresponding author of the article.

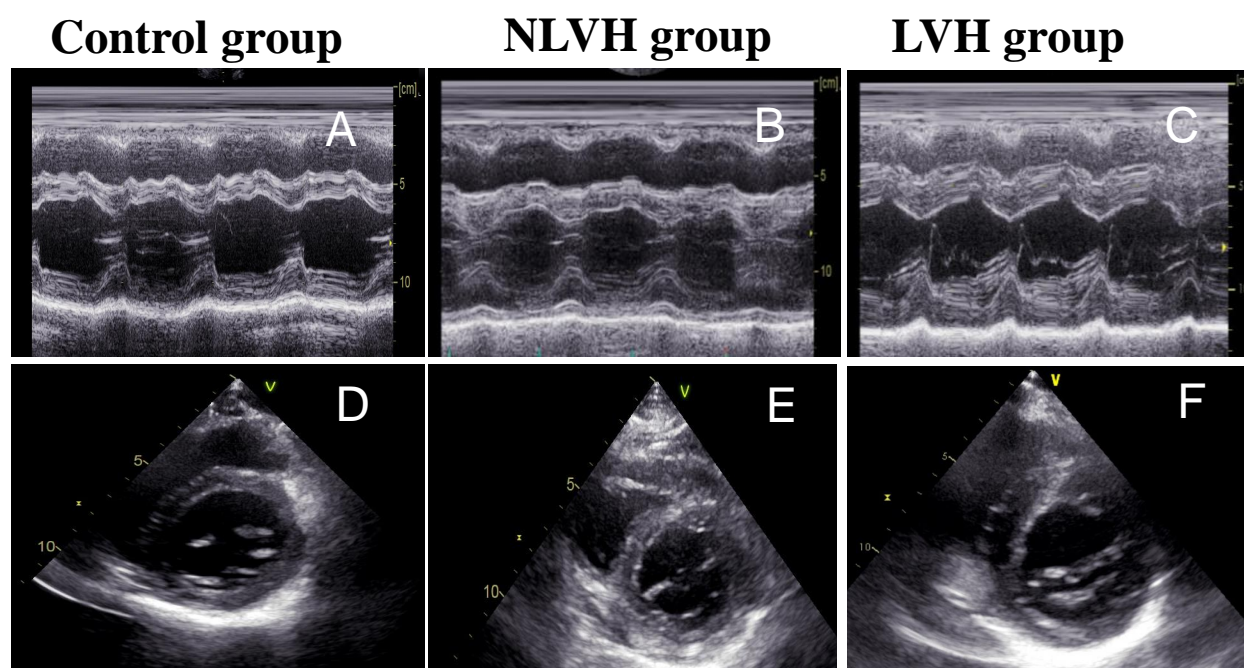
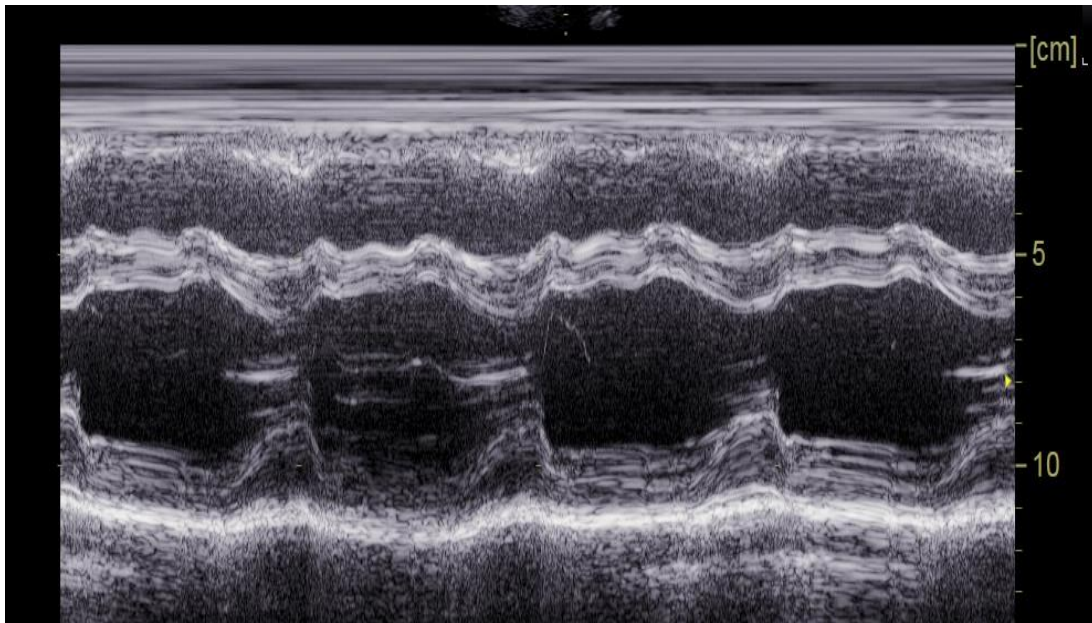


Figure S1. Left ventricular posterior wall and left ventricular end-interventricular septum at end diastole were obtained by two-dimensional Doppler echocardiography. Left ventricular posterior wall and left ventricular end-interventricular septum at end diastole of the left ventricular hypertrophy group were dramatically increased compared with no left ventricular hypertrophy group and control group. A,D-control group; B,E- no left ventricular hypertrophy group; C,F- left ventricular hypertrophy group.

Abbreviation: LVH, left ventricular hypertrophy; NLVH, the patients without left ventricular hypertrophy

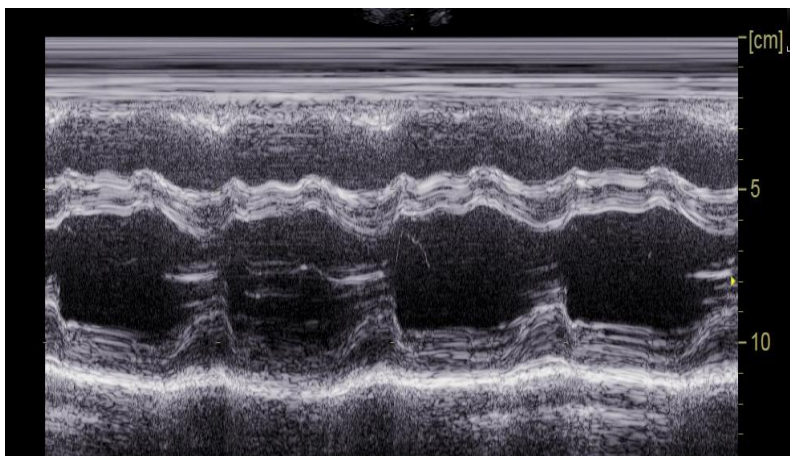
A

Control group



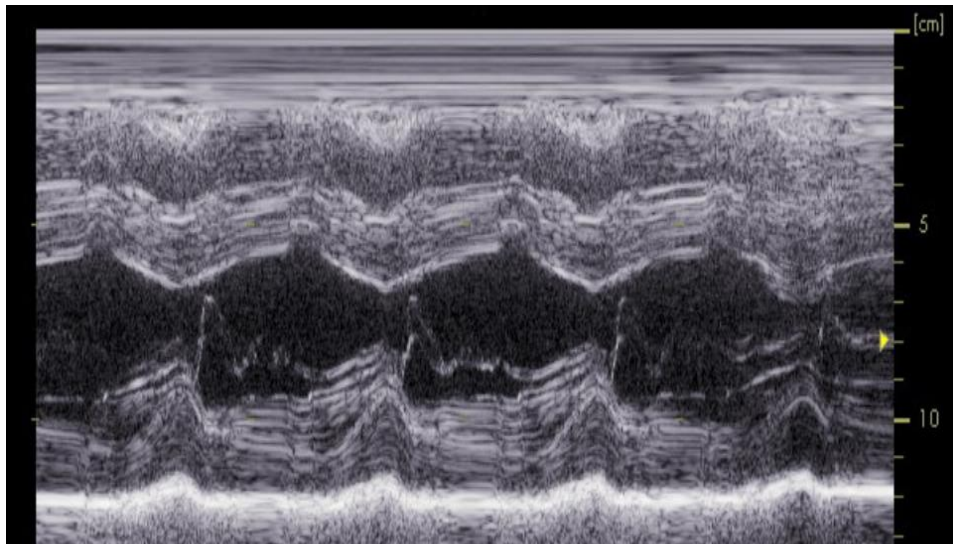
B

Control group



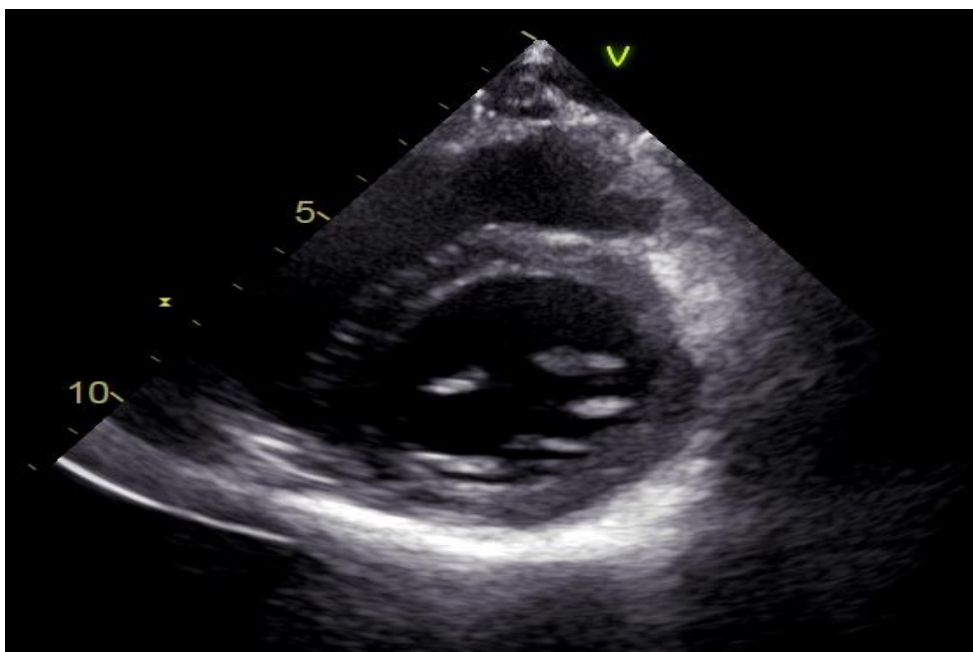
LVH group

C



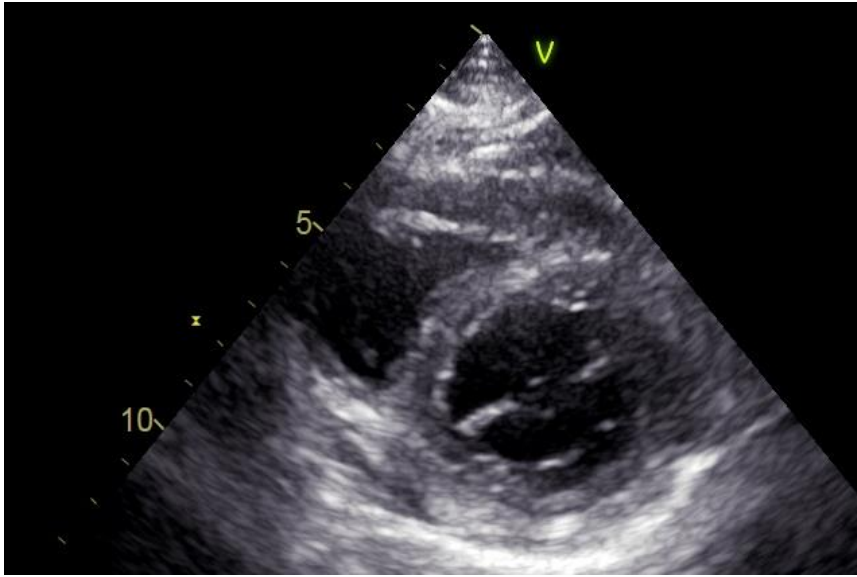
Control group

D



NLVH group

E



F

LVH group

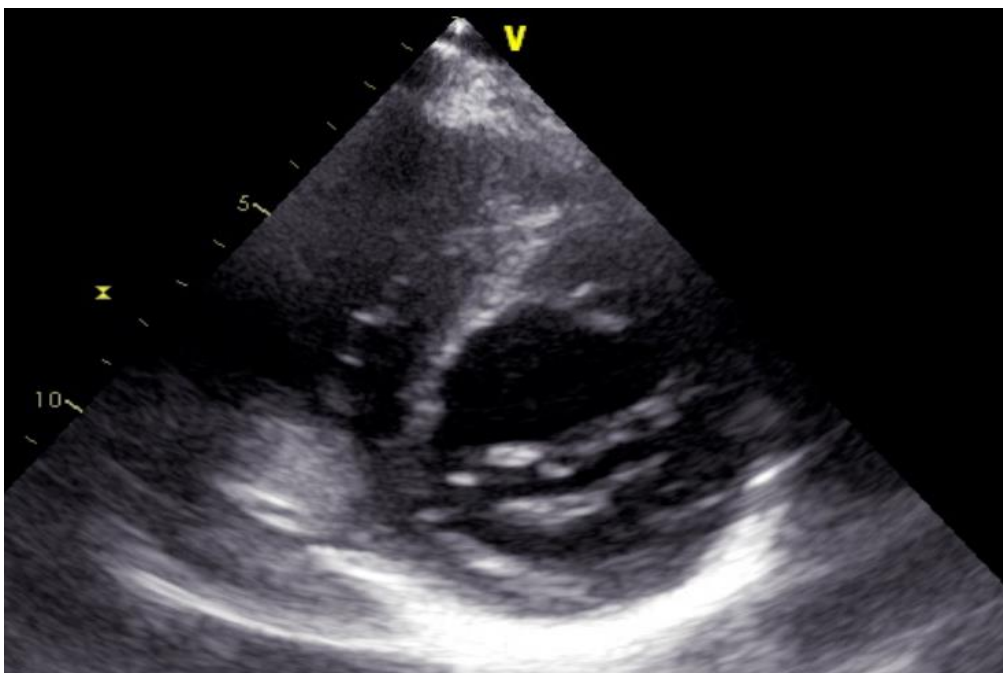


Table S1 Inter- and intra-observer variability				
	Bias	Limits of agreement	% variability	ICC
Inter-observer variability				
LAVI	-0.23	±1.44	2.51%	0.91
TR max	-0.36	±2.10	2.86%	0.72
Average E/e'	-0.02	±0.051	2.73%	0.68
DT	-1.12	±1.42	3.29%	0.88
E	-0.98	±1.19	3.08%	0.77
E/A	-0.52	±3.18	3.17%	0.65
val Δ E/A	-0.29	±1.44	2.41%	0.91
Ar-A duration	-0.33	±1.59	2.33%	0.76
	Bias	Limits of agreement	% variability	ICC
Inter-observer variability				
LAVI	-1.32	±3.09	4.68%	0.72
TR max	-0.25	±1.44	2.46%	0.93
Average E/e'	-0.65	±1.84	6.21%	0.75
DT	-0.9	±1.15	3.23%	0.65
E	-0.96	±1.17	3.87%	0.83
E/A	-0.75	±1.88	4.98%	0.76
val Δ E/A	-0.87	±1.90	5.23%	0.77
Ar-A duration	0.32	±2.61	4.99%	0.62
Abbreviation: ICC, Intra-class correlation coefficient; others see Table 1				

Table S2 Comparisons of baseline characteristics

	Control vs NLVH	Control vs LVH	LVH vs NLVH
	<i>P</i> value		
Male	0.32	0.54	0.26
BSA	0.07	0.21	0.19
BMI	0.12	0.19	0.24
Heart rate	0.32	0.58	0.23
Hyperlipidemia	0.33	0.08	0.07
Smoking	0.44	0.47	0.51
SBP	0.002	0.006	0.003
DBP	0.06	0.17	0.34
LAD	0.002	0.01	0.007
IVSD	0.02	0.003	0.002
LVPWD	0.01	0.01	0.02
LVEDV	0.23	0.004	0.004
LVESV	0.06	0.13	0.09
LVEF	0.16	0.08	0.21
LAVI	0.09	0.002	<0.001
TRmax	0.22	0.001	0.01
Average E/e'	0.17	<0.001	0.002
DT	0.42	0.18	0.07
E	0.06	0.12	0.08
A	0.01	0.007	0.003
E/A	0.02	0.005	0.002
val Δ E/A	0.14	0.02	0.009
Ar-A duration	0.001	0.004	<0.001

Abbreviation see Table 1.

Table S3 Logistic regression analysis of factors associated with left ventricular hypertrophy in hypertensive patients

Variables	Unadjusted		Adjusted	
	OR(95%)	<i>P</i> value	OR(95%)	<i>P</i> value
Male,n(%)	1.04(0.97-1.06)	0.26	-	-
BSA(m ²)	1.02(0.89-1.25)	0.10	-	-
BMI(kg/m ²)	0.89(0.35-2.32)	0.15	-	-
Heart rate(bpm)	0.97(0.91-1.04)	0.09	-	-
Hyperlipidemian n(%)	0.35(0.12-1.18)	0.06	-	-
Smokingn n (%)	0.98(0.95-0.99)	0.06	-	-
SBP (mmHg)	1.49(1.17-1.87)	0.003	1.51(1.19-1.98)	0.001
LVEDV(mL)	1.12(0.90-1.21)	0.09	-	-
LVESV(mL)	1.32(0.93-1.88)	0.13	-	-
LVEF(%)	1.78(0.95-1.93)	0.13	-	-
TR max(cm/s)	1.26(1.08-1.63)	<0.001	0.92(0.86-1.07)	0.10
Average E/e'	1.52(1.22-1.99)	<0.001	0.76(0.51-1.04)	0.09
DT(cm/s)	1.14(0.94-1.42)	0.22	-	-
E(m/s)	0.85(0.64-1.18)	0.21	-	-
A(m/s)	1.46(1.15-1.98)	0.007	1.17(0.89-1.76)	0.32
E/A	1.31(1.07-1.76)	<0.001	1.30(1.02-1.70)	0.051
val Δ E/A	1.50(1.15-1.96)	0.001	1.02(0.93-1.05)	0.15
Ar-A duration(ms)	1.33(1.16-1.82)	0.03	0.94(0.82-1.01)	0.07
Th17 cells(%)	1.62(1.21-2.08)	<0.001	1.47(1.23-2.28)	0.005

Data analysis was performed using univariable logistic regression analysis and multivariable logistic regression analysis(adopted factors:gender, BSA, BMI, Heart rate, Hyperlipidemian, Smokingn, SBP, LVEDV, VESV, LVEF, TR max, Average E/E', DT, E, A, E/A, val Δ E/A, Ar-A duration, Th17 cells). Abbreviation see Table 1.