

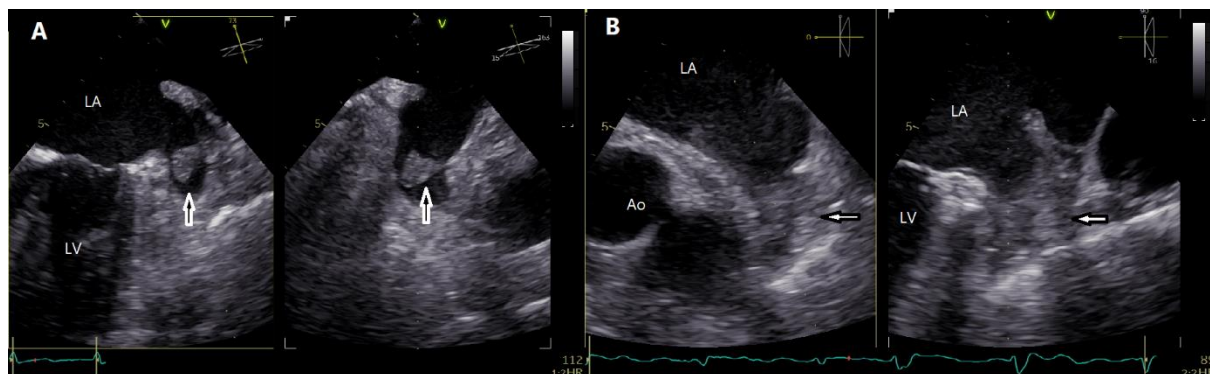
Supplementary material

Streb W, Mitreęa K, Podolecki T, et al. Rationale for cerebral protection in patients with left atrial appendage thrombus during percutaneous left atrial appendage closure: a single-center initial experience. *Pol Arch Intern Med.* 2021; 131: 202-204.
[doi:10.20452/pamw.15711](https://doi.org/10.20452/pamw.15711)

Please note that the journal is not responsible for the scientific accuracy or functionality of any supplementary material submitted by the authors. Any queries (except missing content) should be directed to the corresponding author of the article.

Figure S1

Examples of proximal (A) and distal (B) thrombus in the left atrial appendix in transesophageal echocardiography.



Abbreviations: Ao – aorta; LA- left atrium, LV – left ventricle

* The arrow marks the thrombus in the left atrial appendage