

Supplementary material

Golicki D. General population reference values for the EQ-5D-5L index in Poland: estimations using a Polish directly measured value set. *Pol Arch Intern Med.* 2021; 131: 484-486. doi:10.20452/pamw.15943

Please note that the journal is not responsible for the scientific accuracy or functionality of any supplementary material submitted by the authors. Any queries (except missing content) should be directed to the corresponding author of the article.

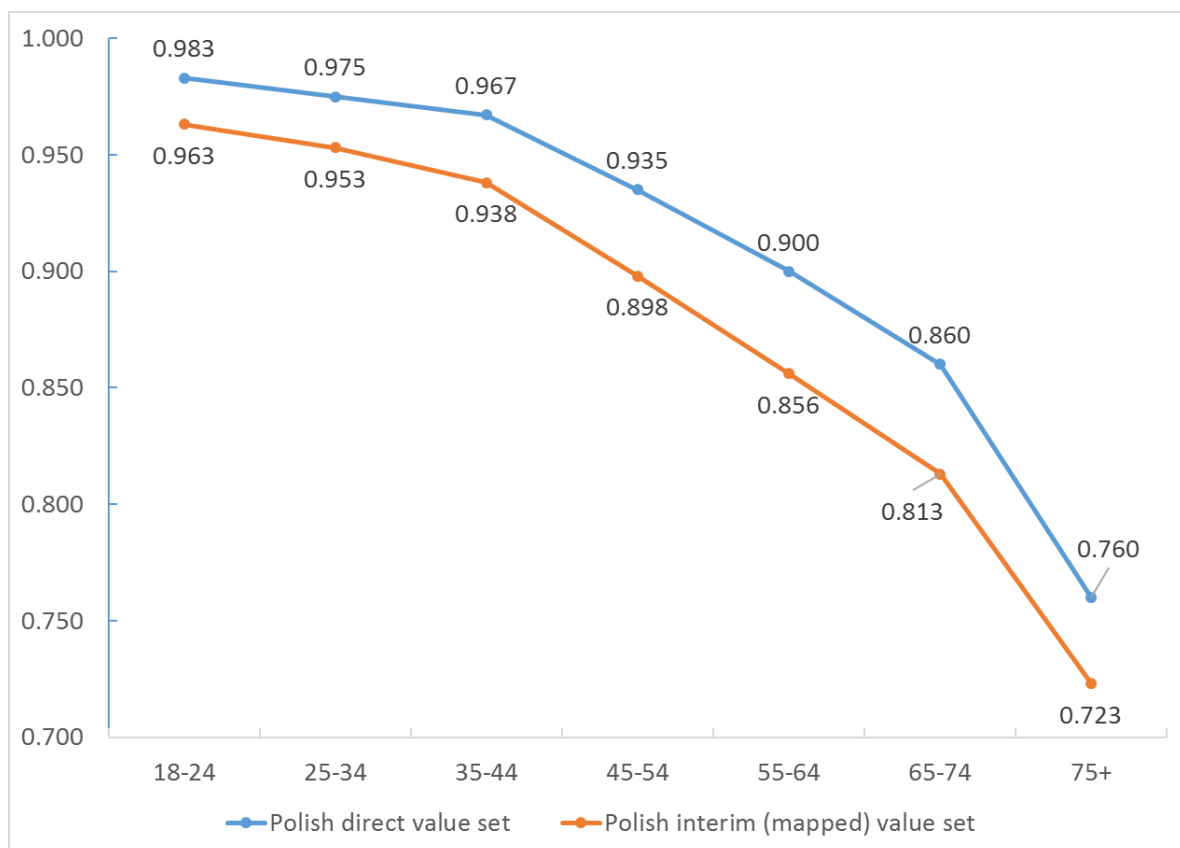


Figure S1 EQ-5D-5L index population norms for Poland, by age group: comparison of two methods of health state utilities estimation - direct (time trade-off and discrete choice experiment-based) versus interim (mapped-based).