

Supplementary material

Scisło P, Rdzanek A, Pietrasik A, et al. The function of the heart after successful transcatheter mitral valve repair due to severe functional regurgitation. Pol Arch Intern Med. 2021; 131: 686-692. doi:10.20452/pamw.16000

Please note that the journal is not responsible for the scientific accuracy or functionality of any supplementary material submitted by the authors. Any queries (except missing content) should be directed to the corresponding author of the article.

Figure S1. Pre- and post-procedural echocardiographic evaluation.

Before ETE-TMVR

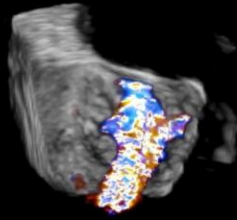
After ETE-TMVR

TEE3D CD, Surgical view

3D Zoom
20 / 3D
% 62 / 45
C 50 / 30
Gen

CF
% 51 / 50
7104Hz
WF 7104Hz
4.4MHz

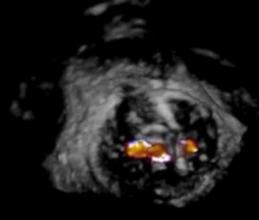
PAT T: 37.0C
TEE T: 39.5C



3D Zoom
20 / 3D
% 57 / 0
C 50 / 30
Gen

CF
% 51 / 50
7104Hz
WF 7104Hz
4.4MHz

PAT T: 37.0C
TEE T: 39.5C

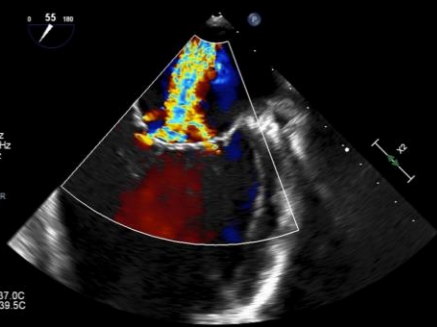


TEE3D CD, Commissural view

17Hz
12cm
2D
59%
C 50
P Off
Gen

CF
49%
7104Hz
WF 7104Hz
4.4MHz

PAT T: 37.0C
TEE T: 39.5C



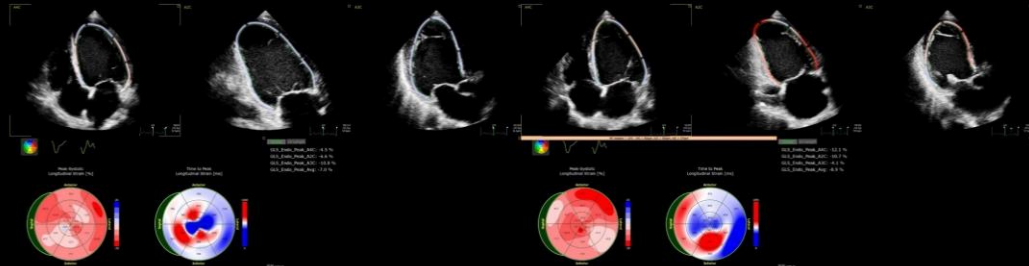
14Hz
13cm
2D
53%
C 50
P Off
Gen

CF
49%
7104Hz
WF 7104Hz
4.4MHz

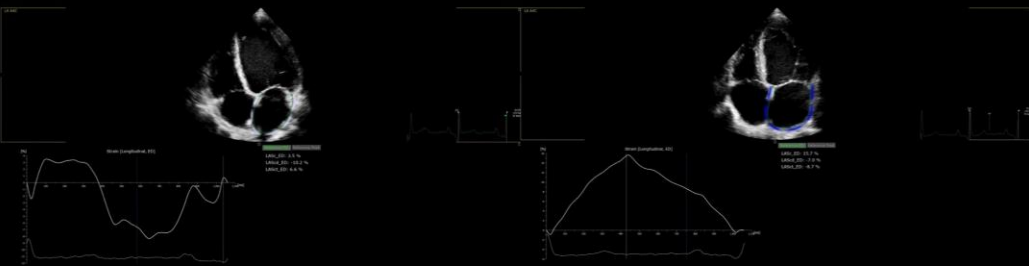
PAT T: 37.0C
TEE T: 39.5C



TTE2D, GLS



TTE2D, LA strain



TTE2D, RV strain

