

Supplementary material

Wojtkowska W, Czekajska-Chehab E, Jankowska A, et al. Idiopathic left ventricular subendocardial dissecting hematoma. *Pol Arch Intern Med.* 2022; 132: 16299. doi:10.20452/pamw.16299

Please note that the journal is not responsible for the scientific accuracy or functionality of any supplementary material submitted by the authors. Any queries (except missing content) should be directed to the corresponding author of the article.

Figure S1. **A** - Angio-CT image: a massive subendocardial dissecting hematoma (short axis); **B** - Angio-CT image: a massive subendocardial dissecting hematoma (axial view - four chamber); **C** - Angio-CT image: a massive subendocardial dissecting hematoma (coronal view - two chamber); **D** - Magnetic resonance image: Cine (two chamber); **E** - Magnetic resonance image: Cine (four chamber); **F** - Magnetic resonance image: Cine (short axis); **G** - Magnetic resonance image: LGE (two chamber) - subendocardial dissecting hematoma; **H** - Magnetic resonance image: LGE (two chamber) - subendocardial dissecting hematoma; **I** - Magnetic resonance image: LGE (two chamber) - subendocardial dissecting hematoma

Abbreviations: CT – tomography, LGE - late gadolinium enhancement, LVC – left ventricle cavity, SDH - subendocardial dissecting hematoma.

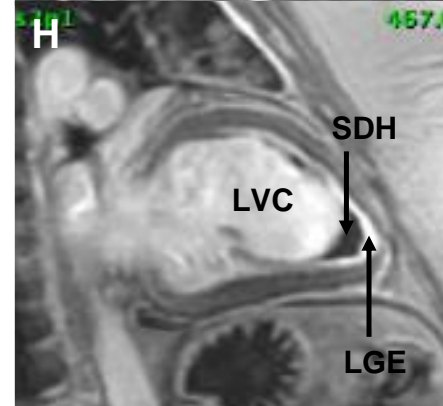
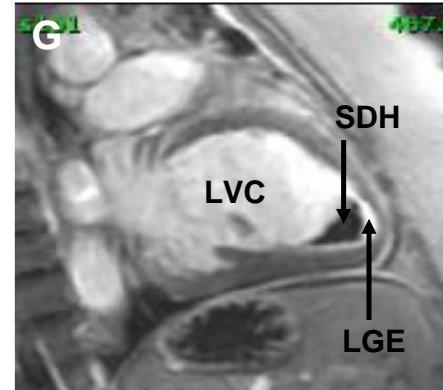
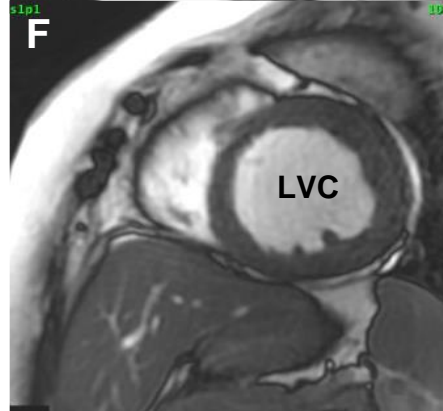
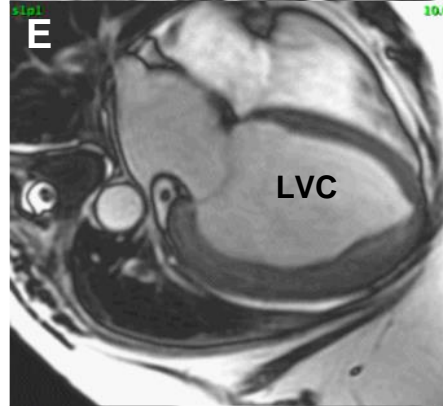
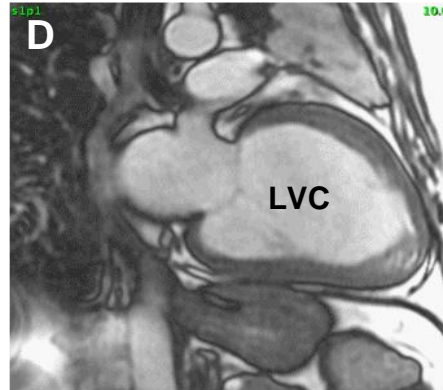
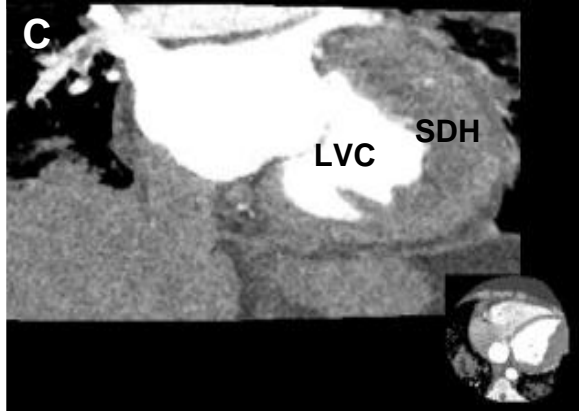
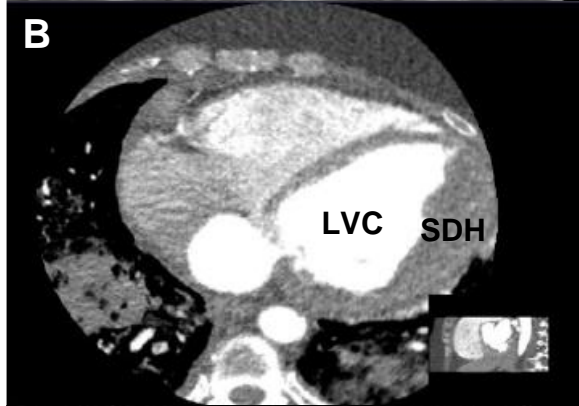
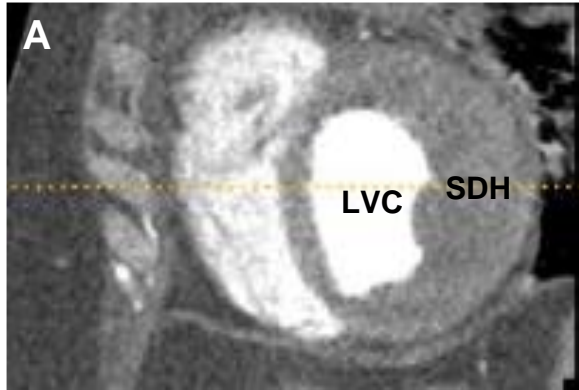


Figure S2. Initial and after 1-month follow-up transthoracic echocardiography (TTE), and transesophageal echocardiography (TEE) showing : intramyocardial dissection of anterolateral left ventricular wall with the formation of a neocavitation containing hematoma (left ventricle endocardium dissection with free-floating membrane – red arrow; subendocardial dissecting hematoma with thrombus – yellow arrow; left ventricle cavity – white arrow). **A** – initial two dimensional (2D) TTE modified parasternal long-axis view; **B** – initial 2D TTE parasternal short-axis view; **C, D, E** – initial 2D TTE four-chamber (4-CH) apical view – consecutive phases of systole; **F** – initial 2D TTE modified 4-CH apical view; **G** – initial 2D TTE two-chamber (2-CH) apical view; **H** – initial 2D TTE 2-CH apical view with color Doppler imaging; **I** – initial 2D TEE 4-CH midesophageal view – systole; **J** – initial 2D TEE 4-CH midesophageal view – diastole; **K** - initial 2D TEE transgastric short-axis view; **L** - initial 2D TEE modified transgastric short-axis view; **M** - follow-up 2D TTE parasternal short-axis view; **N** - follow-up 2D TTE 4-CH apical view; **O** - follow-up 2D TEE 4-CH midesophageal view; **P** - follow-up three dimensional (3D) TEE 4-CH midesophageal view

Abbreviations: TTE – transthoracic echocardiography, TEE – transesophageal echocardiography, 2D- two dimensional, 2-CH – two chamber, 4-CH- four chamber

