

Supplementary material

Szlacheta P, Malinowska-Borowska J, Nowak JU, et al. Long-term prognostic scores may underestimate the risk of death in patients with heart failure with reduced ejection fraction in whom red cell distribution width is elevated. *Pol Arch Intern Med.* 2023; 133: 16494.
[doi:10.20452/pamw.16494](https://doi.org/10.20452/pamw.16494)

Please note that the journal is not responsible for the scientific accuracy or functionality of any supplementary material submitted by the authors. Any queries (except missing content) should be directed to the corresponding author of the article.

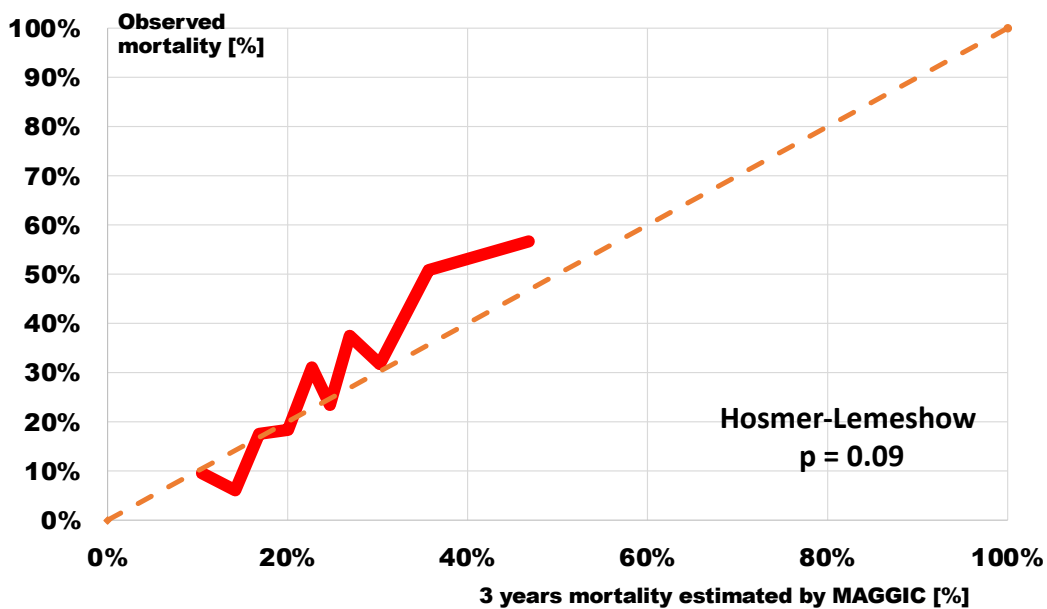


Figure S1 Relationship between mortality estimated based on MAGGIC-HF and observed during 3-year follow-up.

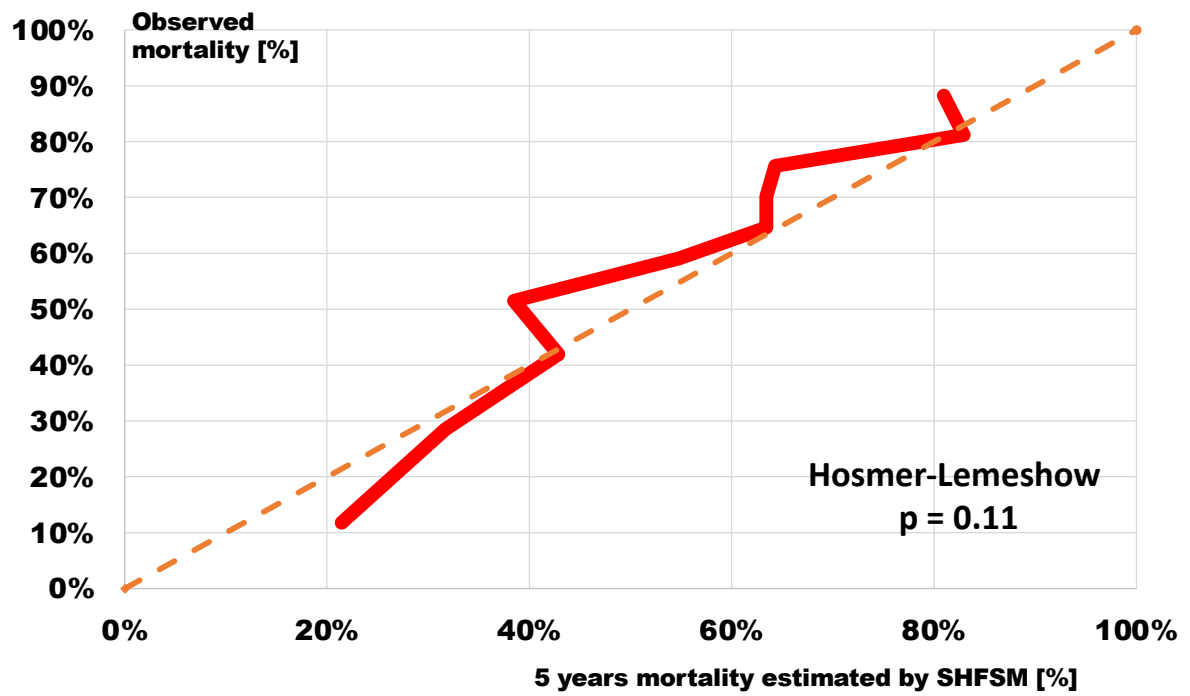


Figure S2. Relationship between mortality estimated based on SHFSM and observed during 5-year follow-up.

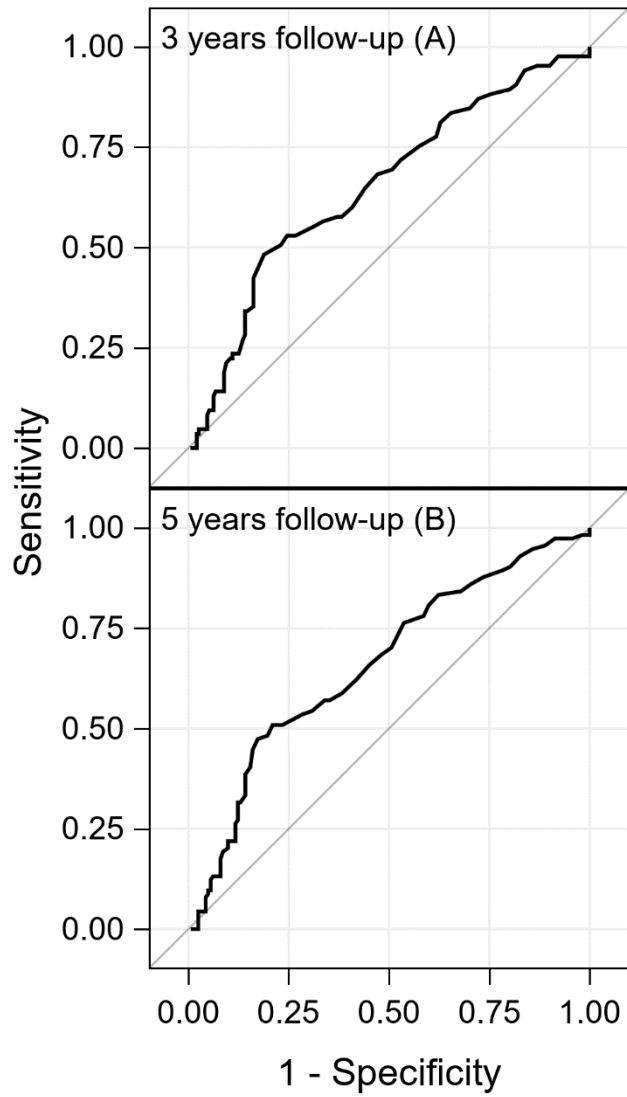


Figure S3 Receiver operating characteristics of RDW in discrimination of mortality in 3 (A) and 5 (B) years follow-up.

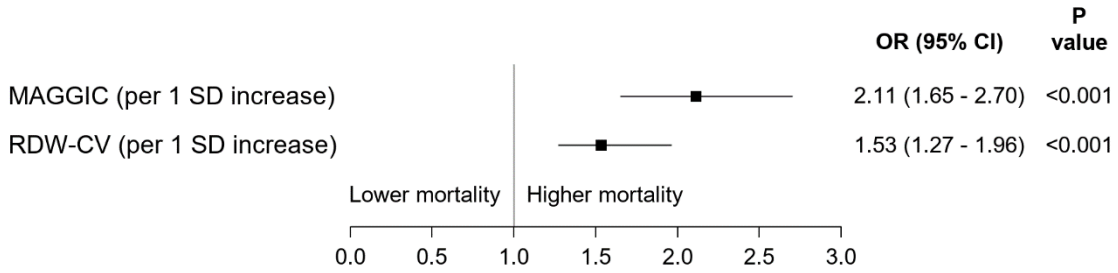


Figure S4 Odds ratio for 3 years all-cause mortality, RDW-CV expressed as continuous variable after adjustment for MAGGIC-HF.

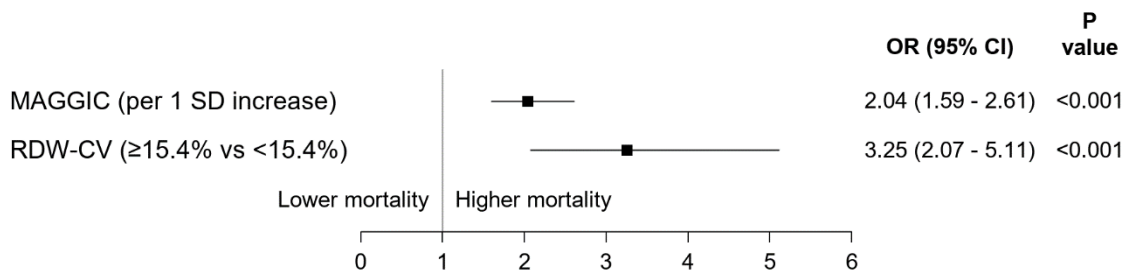


Figure S5 Odds ratio for 3 years all-cause mortality, RDW-CV expressed as categories $\geq 15.4\%$ versus $< 15.4\%$ after adjustment for MAGGIC-HF.

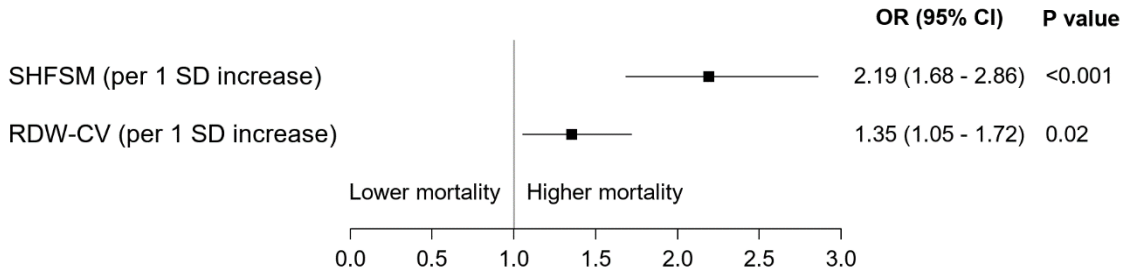


Figure S6 Odds ratio for 5 years all-cause mortality, RDW-CV expressed as continuous variable after adjustment for SHFSM.

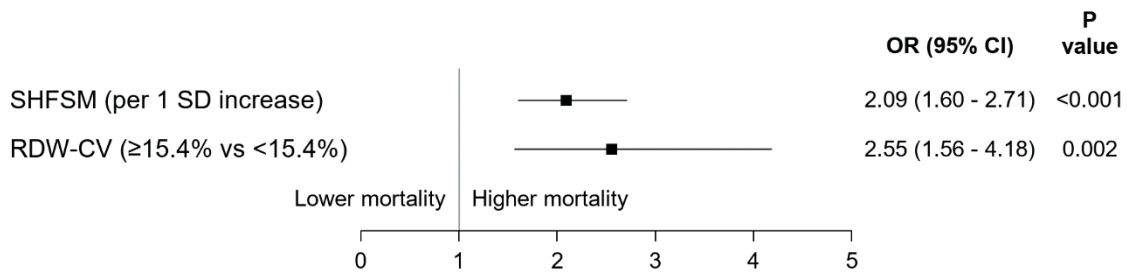


Figure S7 Odds ratio for 5 years all-cause mortality, RDW-CV expressed as categories $\geq 15.4\%$ versus $< 15.4\%$ after adjustment for SHFSM.