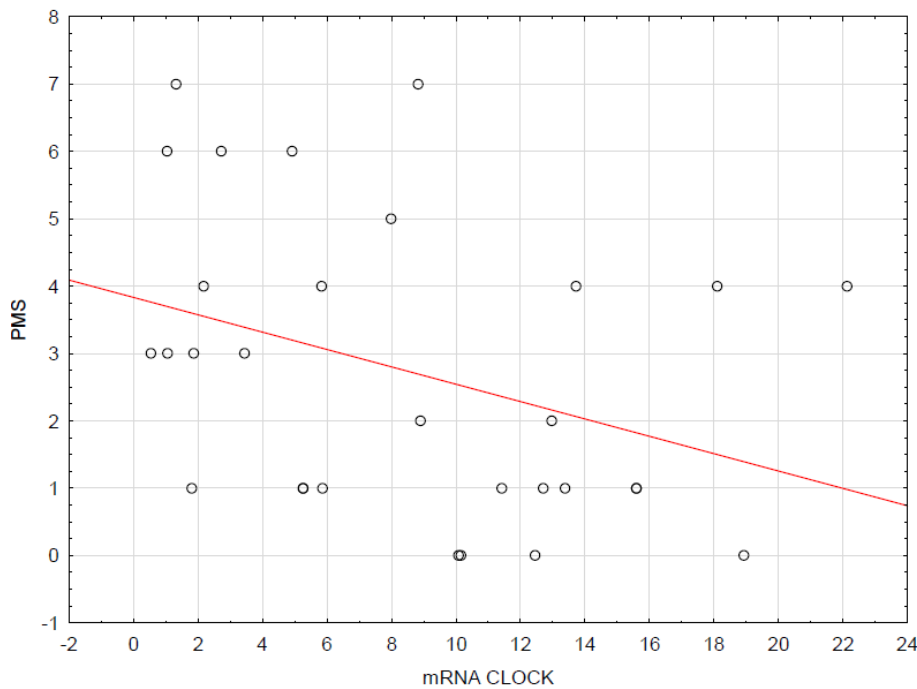


## Supplementary material

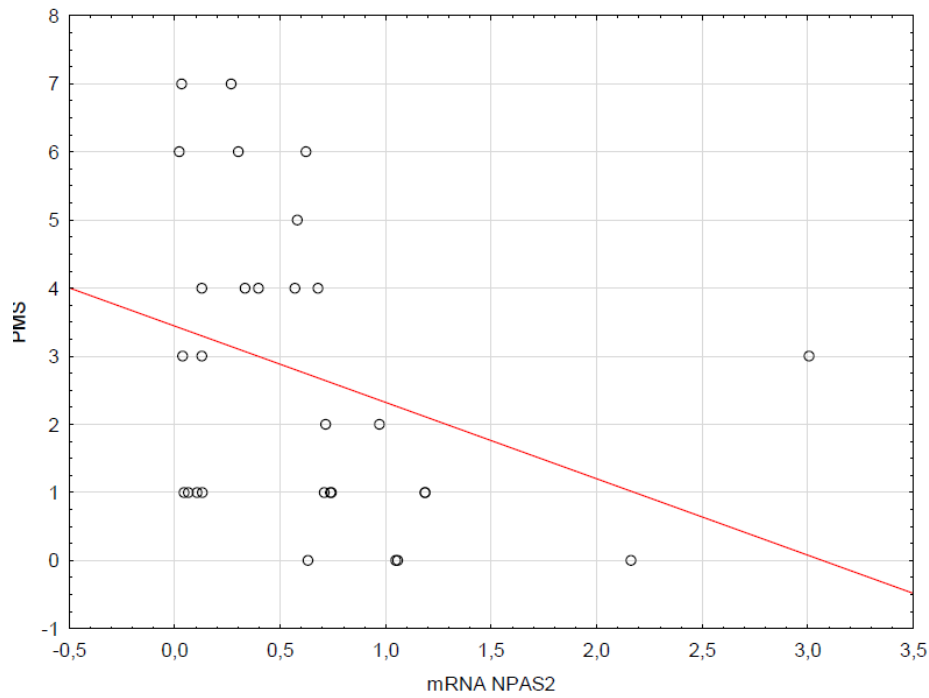
Sochal M, Binienda A, Ditmer M, et al. Correlations between the symptoms of insomnia, depression, sleep quality, antitumor necrosis factor therapy, and disrupted circadian clock gene expression in inflammatory bowel disease. *Pol Arch Intern Med.* 2023; 133: 16487. doi:10.20452/pamw.16487.

Please note that the journal is not responsible for the scientific accuracy or functionality of any supplementary material submitted by the authors. Any queries (except missing content) should be directed to the corresponding author of the article.

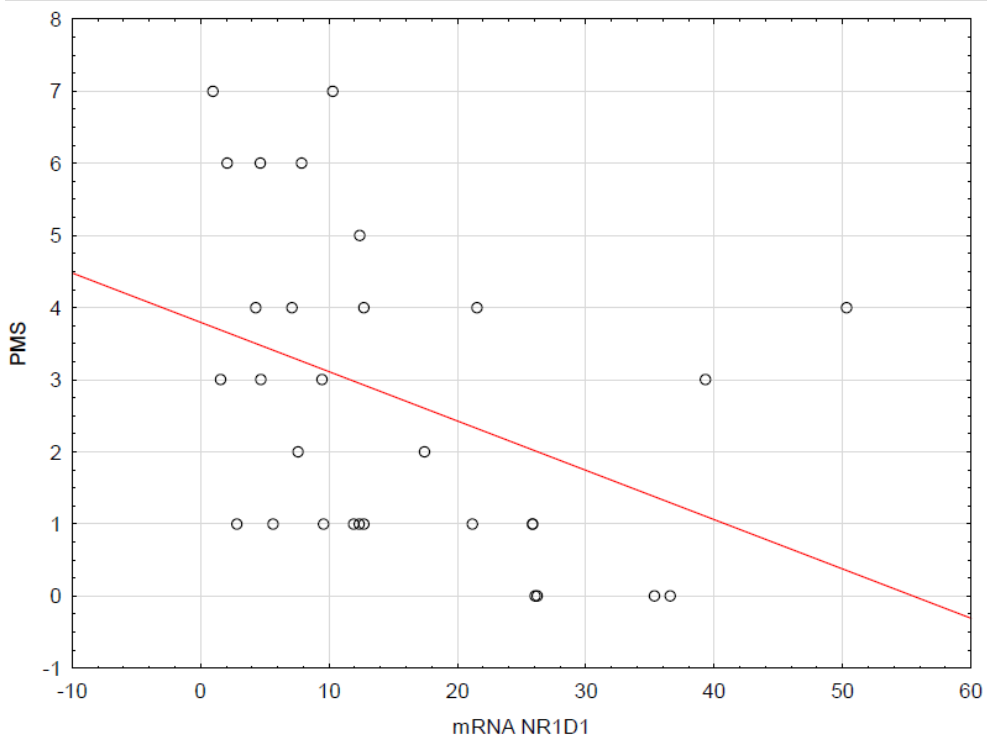
**Figure S1.** Correlation between relative mRNA levels of circadian genes in peripheral blood leukocytes of IBD patients and disease activities assessed with partial Mayo score.



a- Correlation between relative mRNA levels of CLOCK and PMS



b- Correlation between relative mRNA levels of NPAS2 and PMS

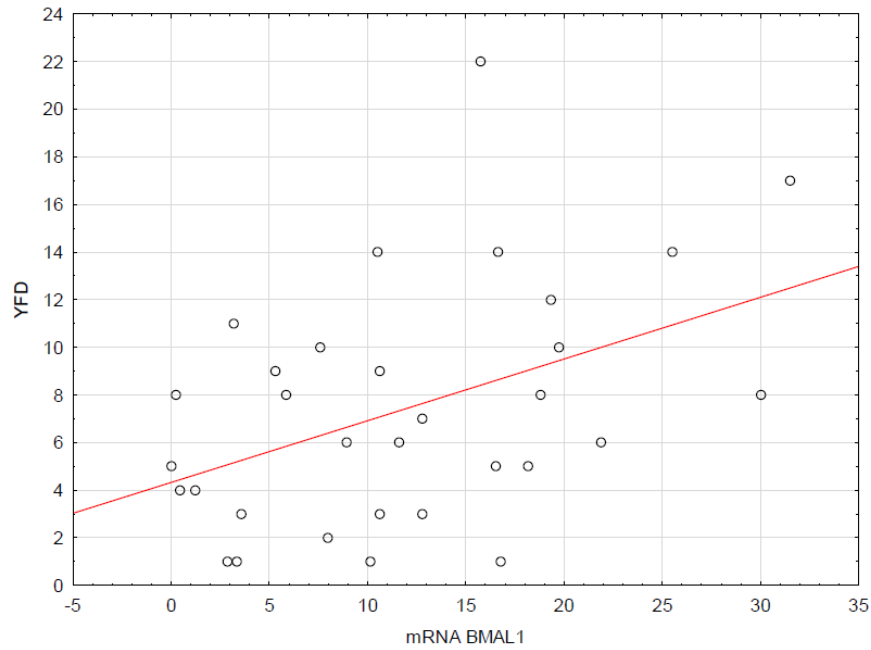


c- Correlation between relative mRNA levels of NR1D1 and PMS

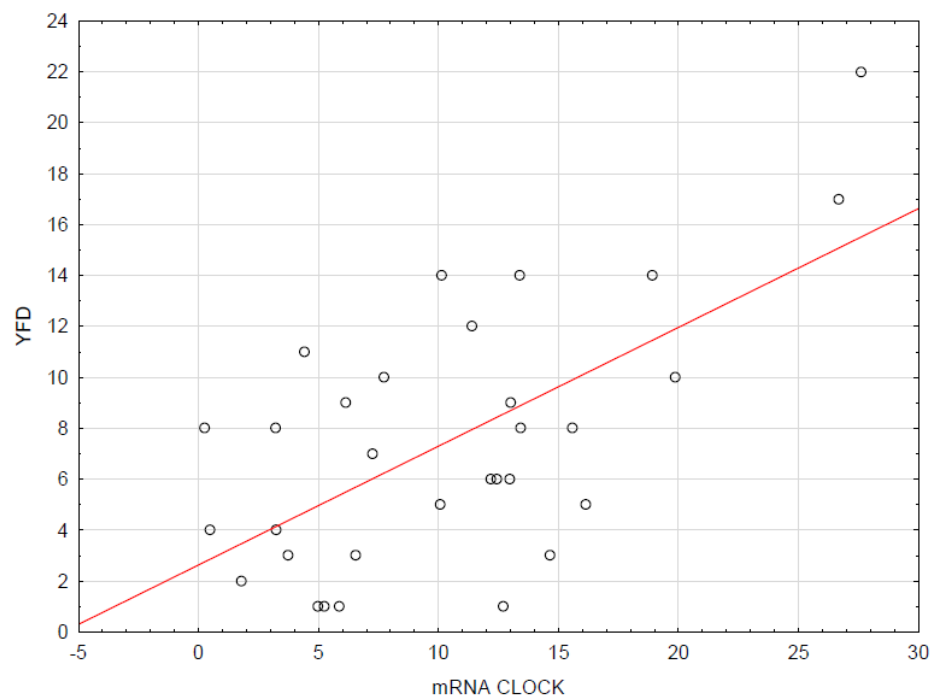
Abbreviations: *CLOCK*- circadian locomotor output cycles kaput. *NPAS2*- neuronal PAS domain protein 2. *NR1D1*- nuclear receptor subfamily 1 group D member 1. PMS- partial Mayo score.

**Figure S2.** Correlation between relative mRNA levels of circadian genes in peripheral blood leukocytes of IBD patients and disease duration.

Abbreviations: *BMAL1*- brain and muscle ARNT-Like 1. *CLOCK*- circadian locomotor output cycles kaput.

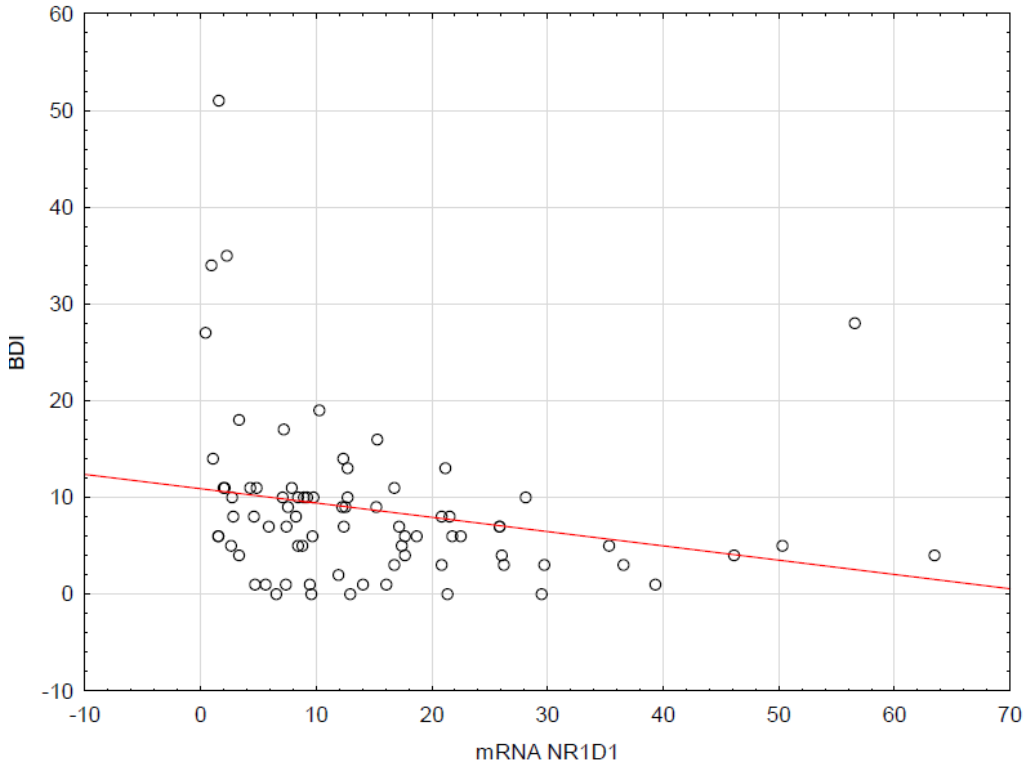


a- Correlation between relative mRNA levels of BMAL1 and disease duration.

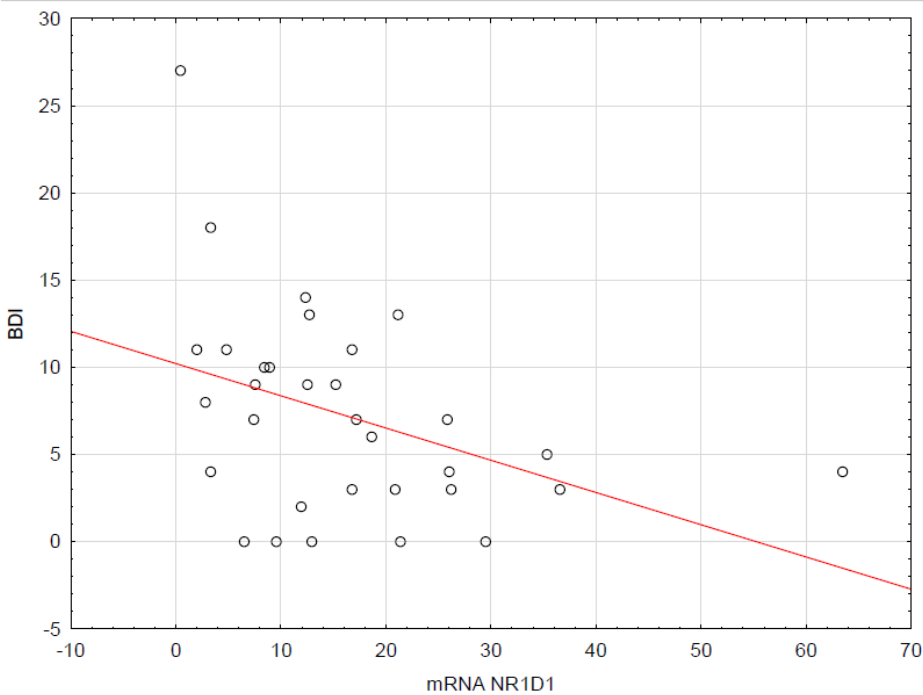


b- Correlation between relative mRNA levels of CLOCK and disease duration.

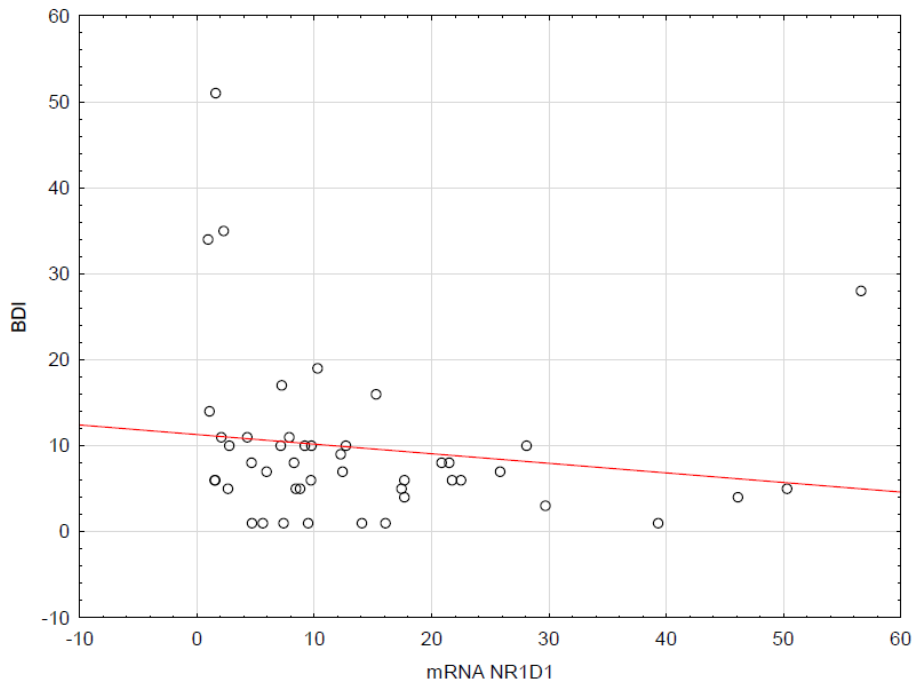
**Figure S3.** Correlation between relative mRNA levels of circadian genes in peripheral blood leukocytes of IBD patients and questionnaire scores.



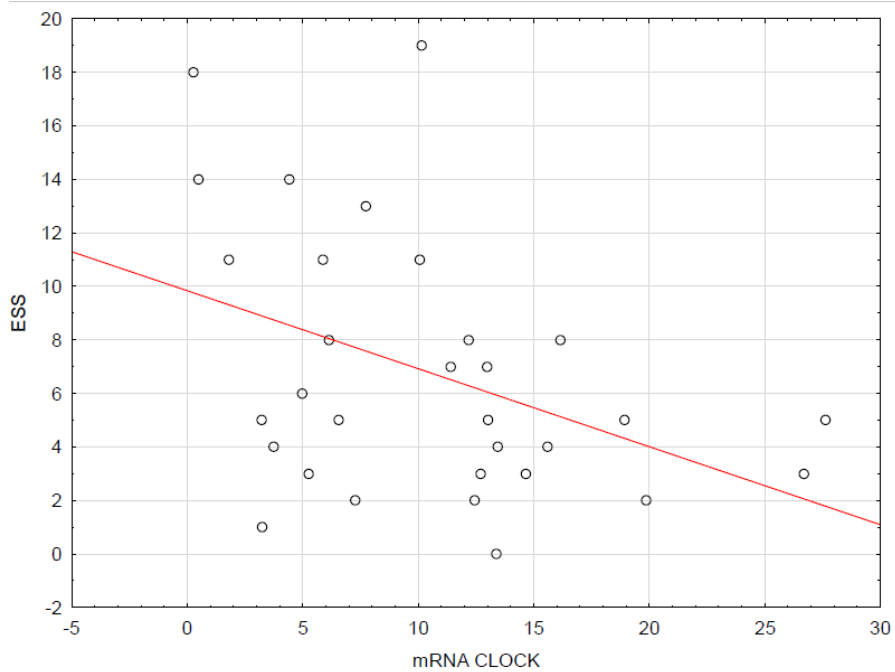
a- Correlation between relative mRNA levels of NR1D1 of all IBD patients and BDI.



b- Correlation between relative mRNA levels of NR1D1 of IBD patients in exacerbation and BDI.



c- Correlation between relative mRNA levels of NR1D1 of IBD patients in remission and BDI.



d- Correlation between relative mRNA levels of CLOCK of IBD patients in remission and ESS.

Abbreviations: BDI- Beck's Depression Inventory. *CLOCK*- circadian locomotor output cycles kaput. ESS- Epworth Sleepiness scale. *NR1D1*- nuclear receptor subfamily 1 group D member 1.