

Supplementary material

Turkiewicz S, Sochal M, Ditmer M, Gabryelska A. Evaluation of oxidative stress in obstructive sleep apnea and its comorbidities using serum concentrations of oxidized guanine species. Pol Arch Intern Med. 2023; 133: 16542. doi:10.20452/pamw.16542

Please note that the journal is not responsible for the scientific accuracy or functionality of any supplementary material submitted by the authors. Any queries (except missing content) should be directed to the corresponding author of the article.

Figure S1. Correlations between oxidative stress levels and chosen variables: **(a)** age ($R=0.463$; $P<0.001$); **(b)** AHI ($R=0.435$; $P<0.001$); **(c)** basal oxygen saturation ($R=-0.397$; $P<0.001$); **(d)** BMI ($R=0.442$; $P<0.001$); **(e)** desaturation index ($R=0.463$; $P<0.001$); **(f)** minimal oxygen saturation ($R=-0.342$; $P=0.005$); **(g)** number of desaturations ($R=0.541$; $P<0.001$). AHI – apnea-hypopnea index, BMI – body mass index, SpO₂ – oxygen saturation.

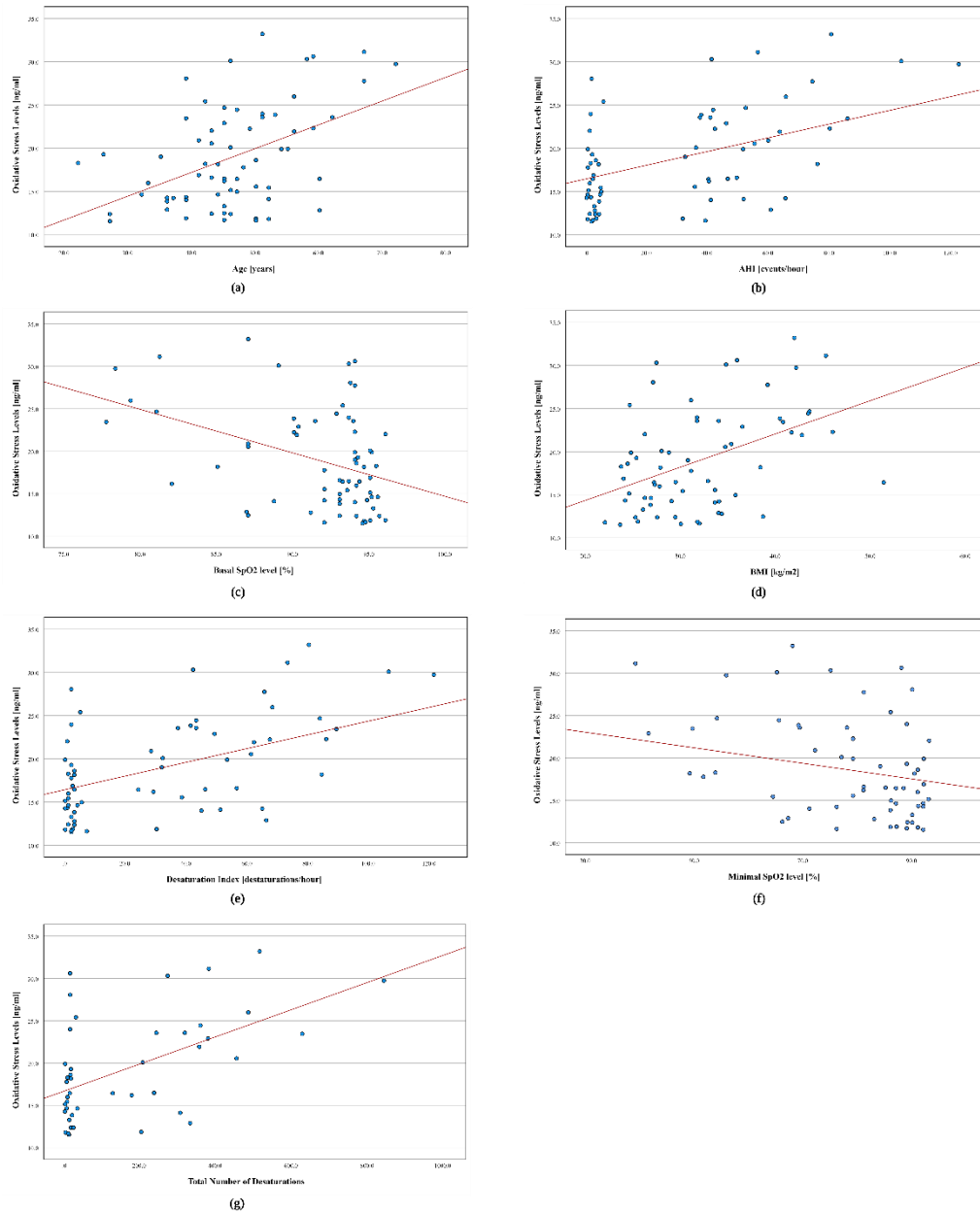


Table S1. Linear regression models for oxidative stress.

Parameters		Oxidative Stress levels		
		$(r^2=0.428, F=9.472, P<0.01)$		
		B	t	P
Included in the model	Constant	N/A	2.379	0.02
	Age	0.373	2.699	0.01
	AHI	-1.145	-1.883	0.07
	Total number of desaturation	1.495	2.493	0.02

AHI – apnea-hypopnea index; B – standardized regression coefficient; N/A – not applicable