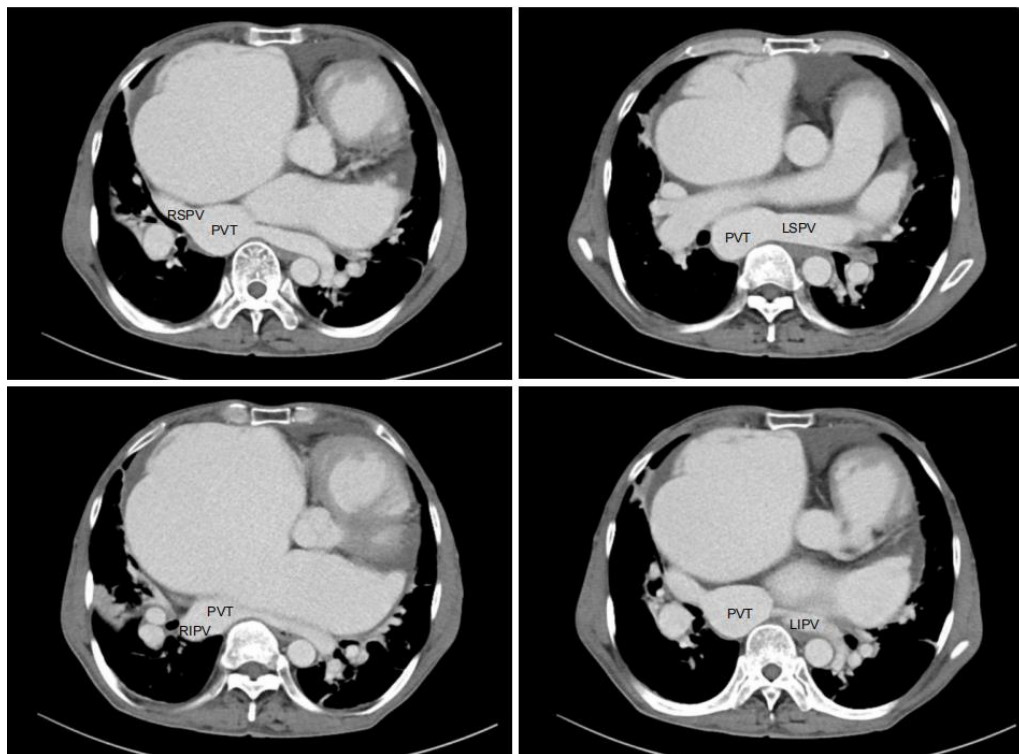


## Supplementary material

Xia Y, Yang X, Sun Z, et al. A middle-aged man with total anomalous pulmonary venous connection. *Pol Arch Intern Med.* 2024; 134: 16605. doi:10.20452/pamw.16605

Please note that the journal is not responsible for the scientific accuracy or functionality of any supplementary material submitted by the authors. Any queries (except missing content) should be directed to the corresponding author of the article.

**Figure S1**



Abbreviations: LIPV – left inferior pulmonary vein; LSPV – left superior pulmonary vein; PVT – pulmonary vein trunk; RIPV – right inferior pulmonary vein

The right superior and inferior pulmonary veins, as well as the left superior and inferior pulmonary veins, converge into the pulmonary vein trunk.