

Supplementary material

Li X, Cao X, Zhou X, et al. Adult multisystem Langerhans cell histiocytosis. Pol Arch Intern Med. 2024; 134: 16664. doi:10.20452/pamw.16664

Please note that the journal is not responsible for the scientific accuracy or functionality of any supplementary material submitted by the authors. Any queries (except missing content) should be directed to the corresponding author of the article.

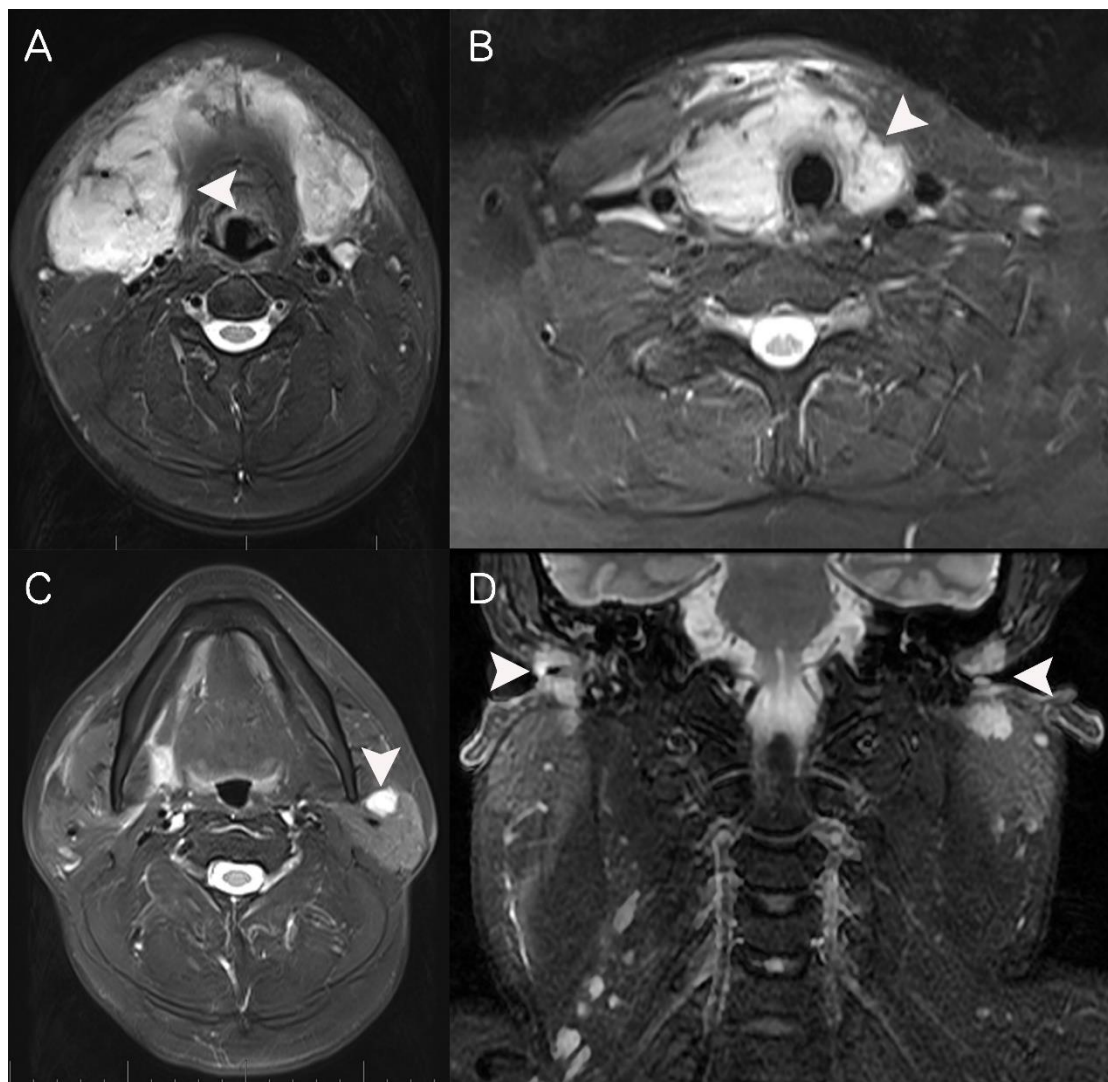


Figure S1. The neck magnetic resonance imaging (MRI) reveals diffuse enlargement of the submandibular glands (A) and the thyroid (B), along with multiple nodules in the left parotid gland (C) and bilateral external auditory canals (D).

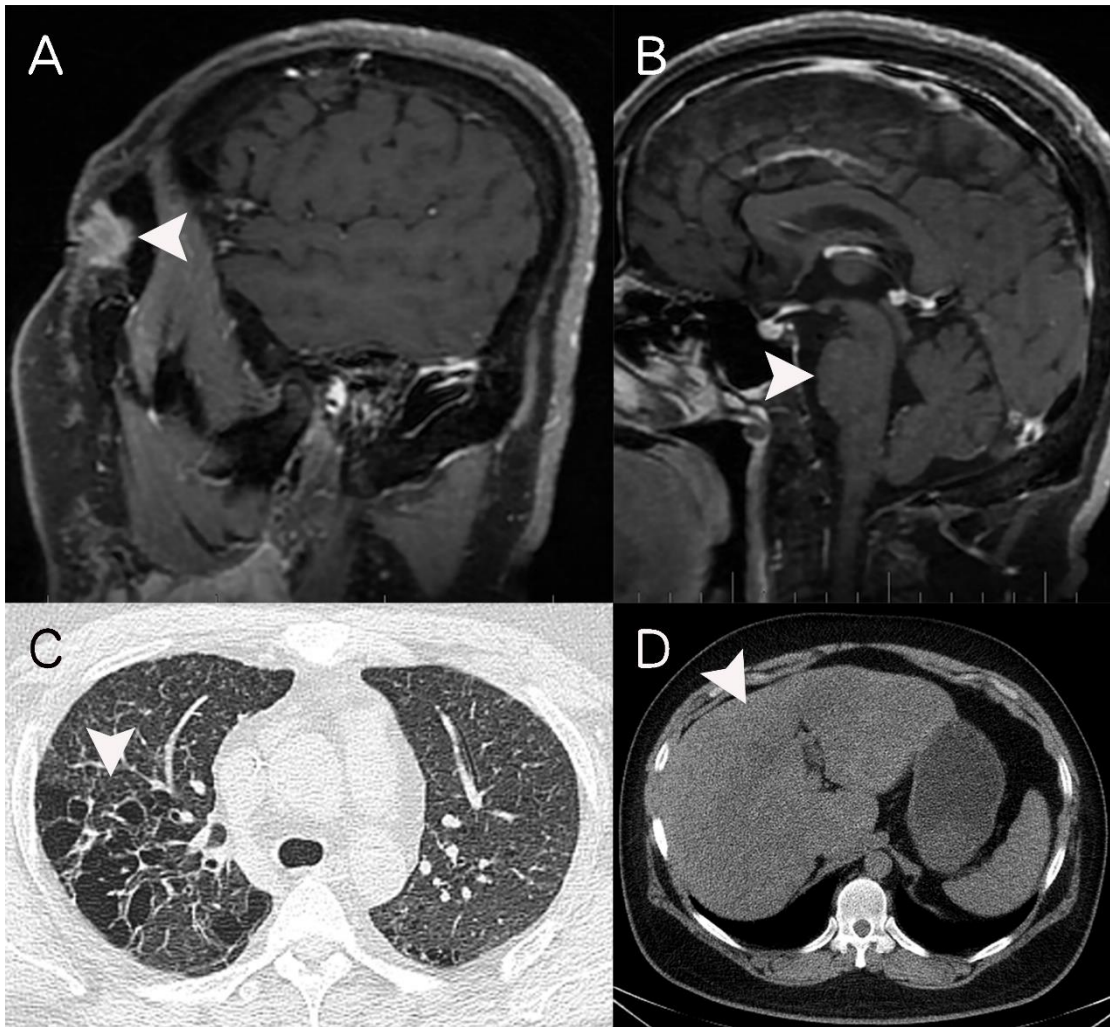


Figure S2. The cranial MRI displays abnormal enhancing nodules on the scalp (**A**) and multiple punctate-enhancing lesions in the thalamus (**B**), while the CT reveals multiple cystic cavities in the lung (**C**) and multiple patchy and nodular low-density lesions in the liver (**D**).