

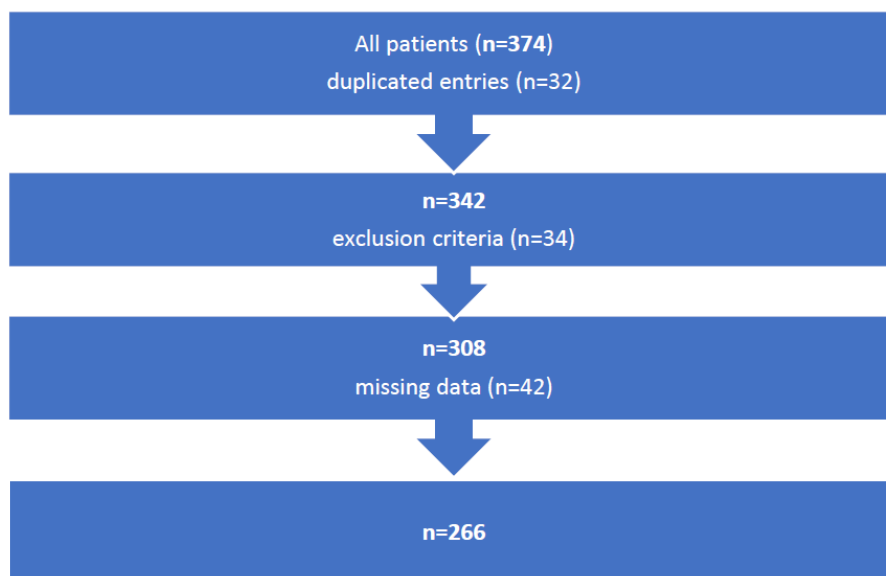
## Supplementary material

---

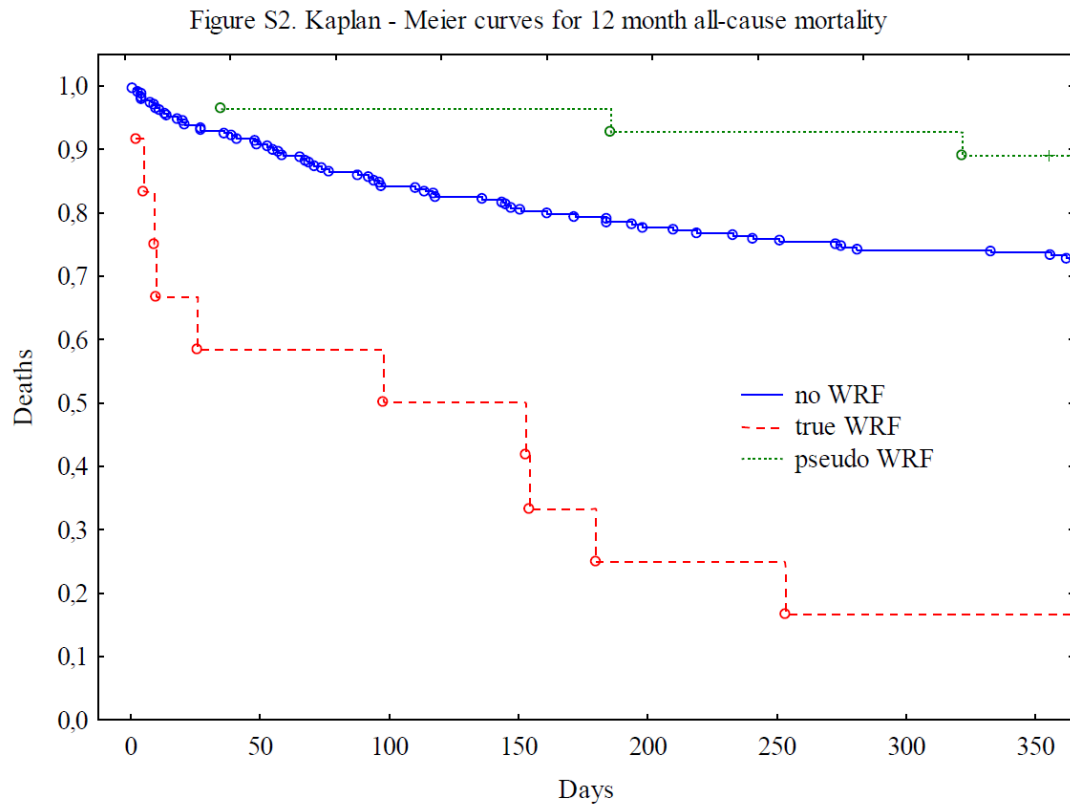
*Sokolski M, Zymlński R, Sokolska JM, et al. True worsening renal function identifies patients with acute heart failure with an ominous outcome. Pol Arch Intern Med. 2019; 129: 357-360. doi:10.20452/pamw.4453*

Please note that the journal is not responsible for the scientific accuracy or functionality of any supplementary material submitted by the authors. Any queries (except missing content) should be directed to the corresponding author of the article.

**Figure S1** Flowchart of the study population



**Figure S2** Kaplan-Meier curves for 12-month all-cause mortality



**Figure S3** Relationship between true worsening renal function, pseudo-worsening renal function, isolated worsening heart failure, and survival in patients with acute heart failure (multivariate Cox vs patients without worsening renal function and without worsening heart failure)

