

Supplementary material

Suska A, Małkowski B, Halaszka K, et al. A rare case of a solitary extramedullary plasmacytoma of the palatine tonsil. Pol Arch Intern Med. 2019; 129: 201-203.

doi:10.20452/pamw.4415

Please note that the journal is not responsible for the scientific accuracy or functionality of any supplementary material submitted by the authors. Any queries (except missing content) should be directed to the corresponding author of the article.

(Figure S1 – S3) Histopathological analysis of biopsy specimen from the left palatine tonsil tumor. **(Figure S1)** Positive immunohistochemical reaction to cluster of differentiation (CD)38, x 200. **(Figure S2)** Positive immunohistochemical reaction to CD56, x 200. **(Figure S3)** Positive immunohistochemical reaction to CD138, x 200. **(Figures S4 – S6)** Bone marrow trephine biopsy. **(Figure S4)** Physiologic distribution of few reactive plasma cells. Immunohistochemical staining for CD138, x 200. **(Figure S5)** Expression of kappa immunoglobulin light chains. Immunohistochemical staining for light kappa chains, x 200. **(Figure S6)** Expression of lambda immunoglobulin light chains. Immunohistochemical staining for light lambda chains, x 200.

Figure S1

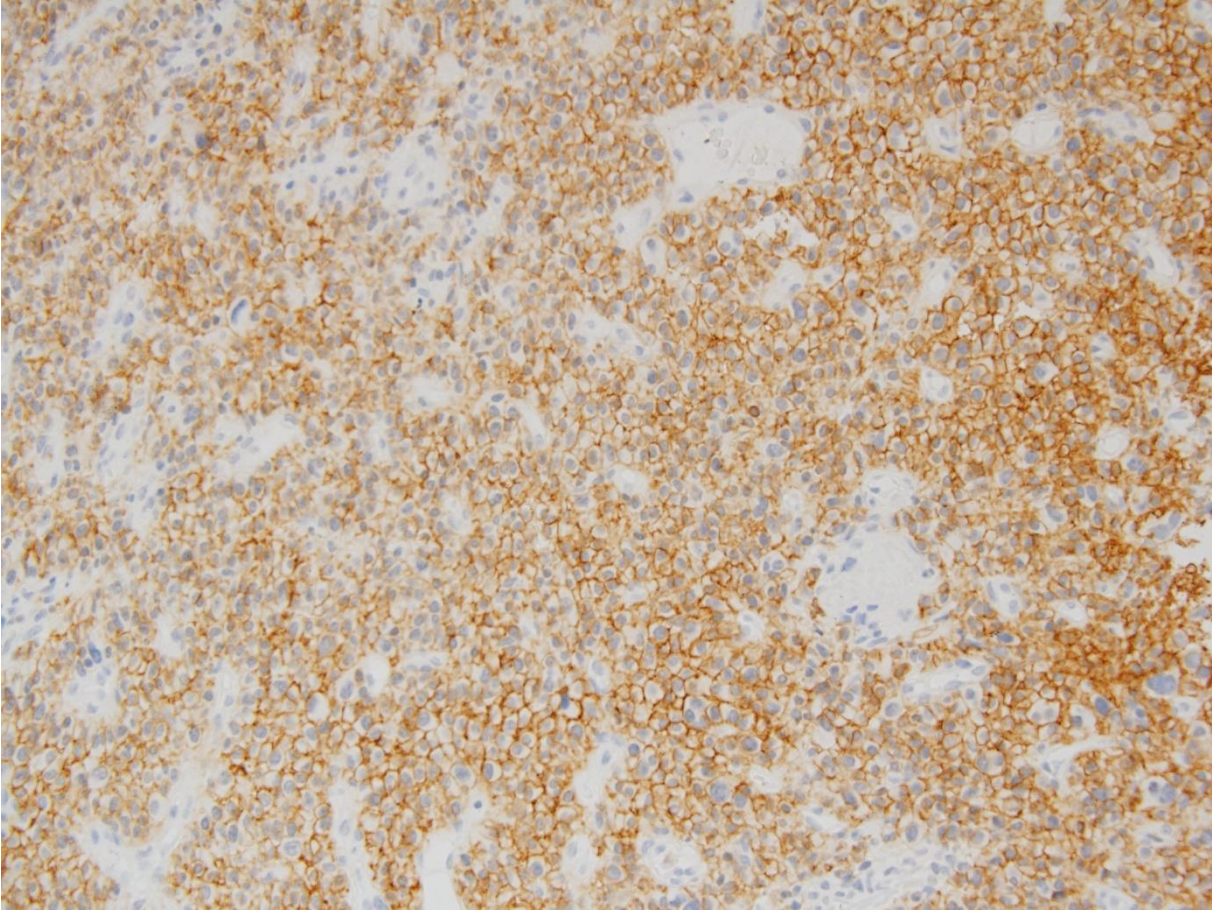


Figure S2

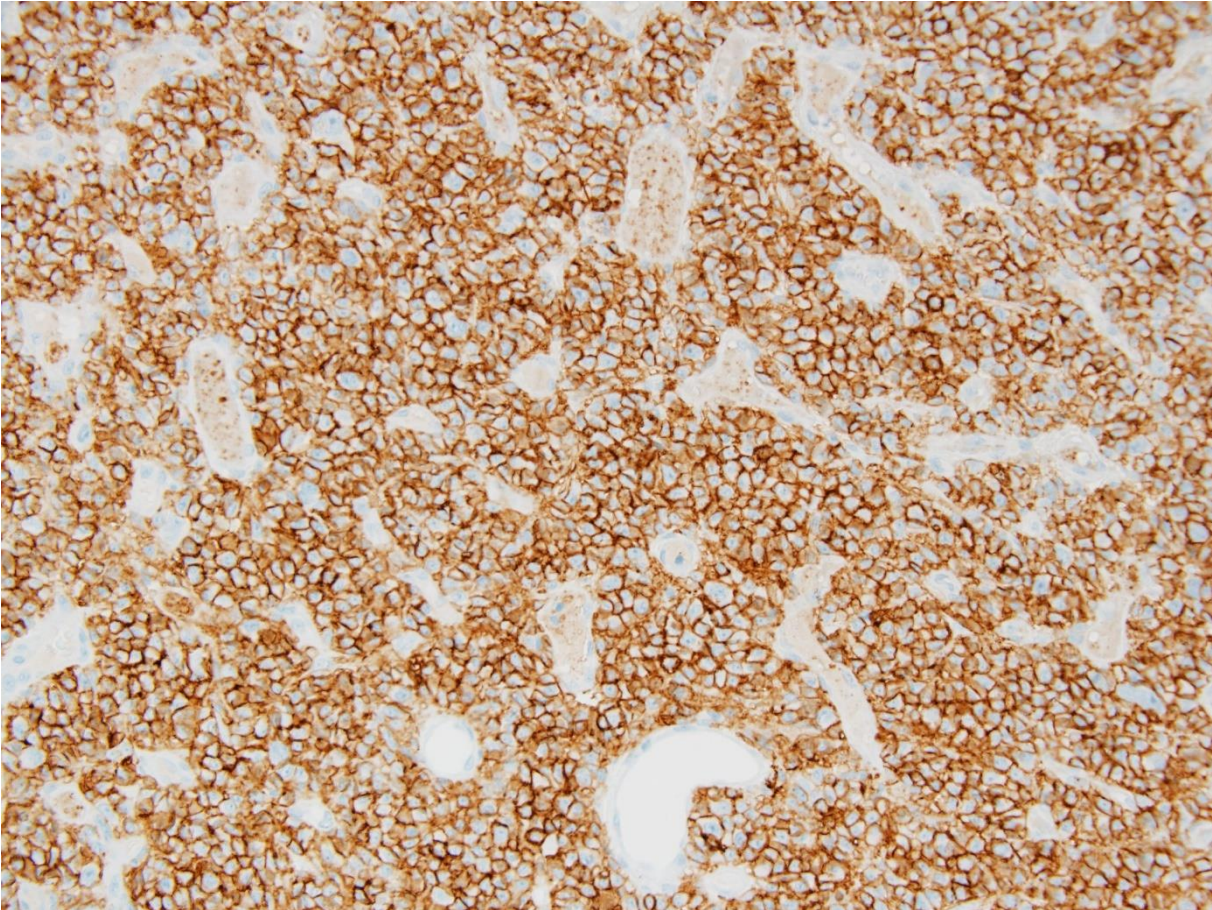


Figure S3

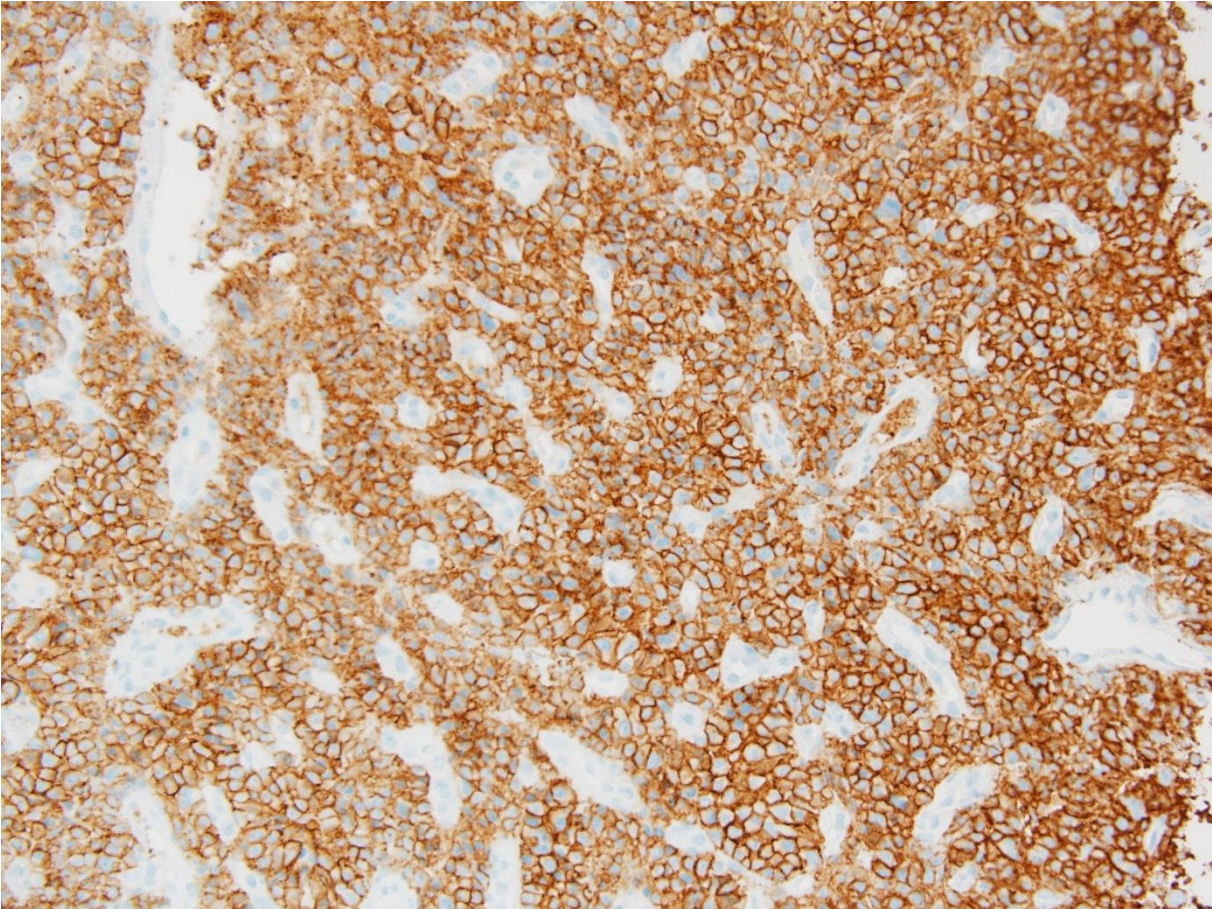


Figure S4

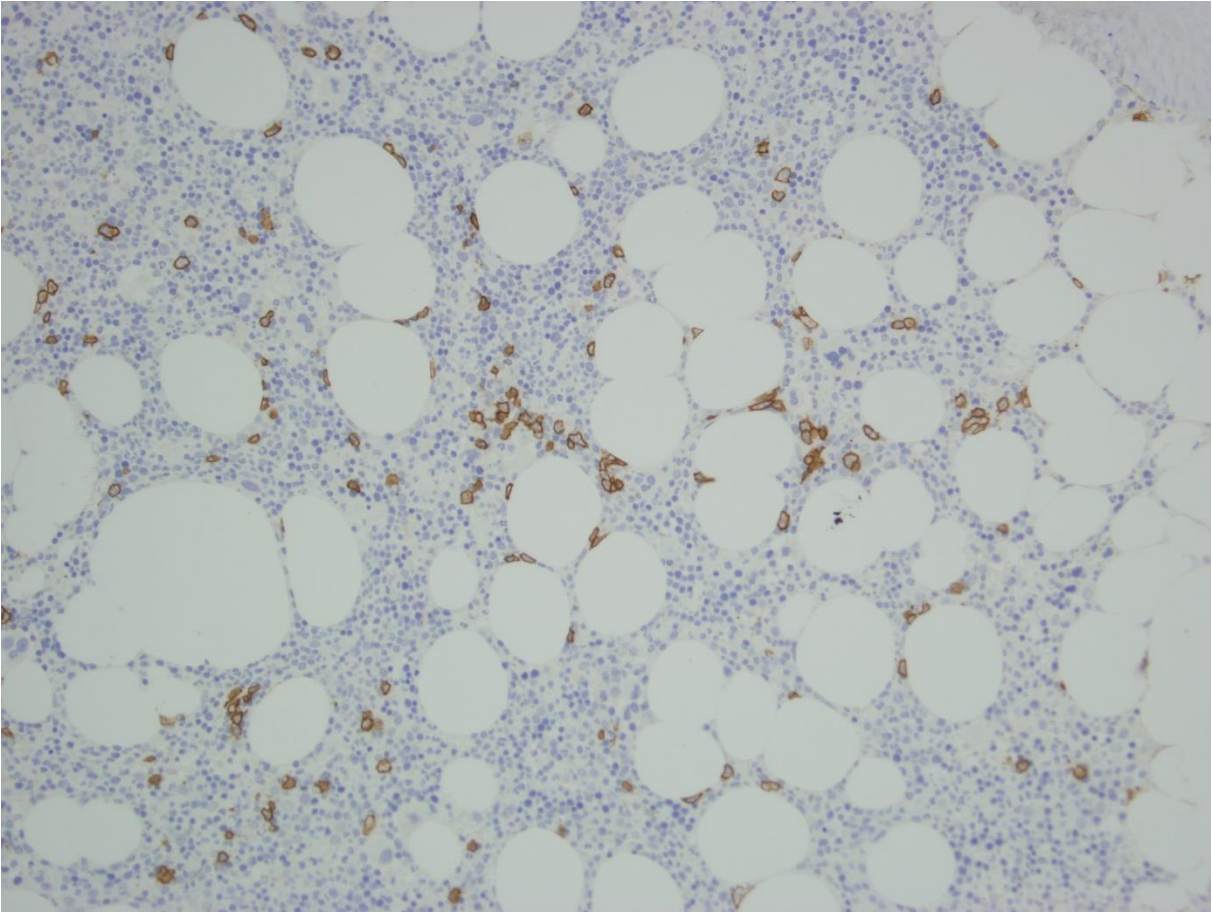


Figure S5

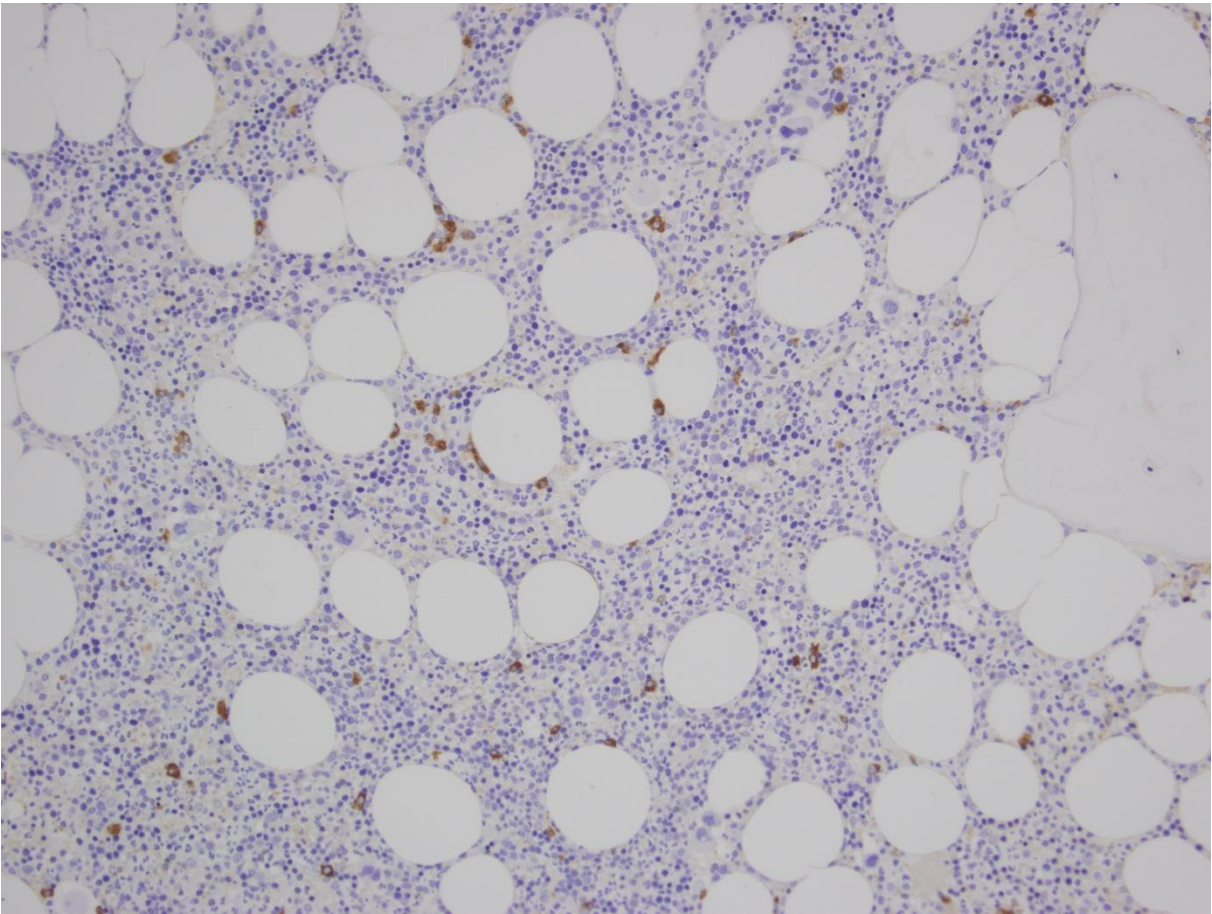


Figure S6

