

## Supplementary material

---

*Boles U, Wiklund U, David S, et al. Coronary artery ectasia carries a worse prognosis: a long-term follow-up study. Pol Arch Intern Med. 2019; 129: 833-835.  
doi:10.20452/pamw.14959*

Please note that the journal is not responsible for the scientific accuracy or functionality of any supplementary material submitted by the authors. Any queries (except missing content) should be directed to the corresponding author of the article.

### Supplementary material

**Table S1** Cardiovascular risk factors comparison between CAE survivors versus cardiovascular mortality

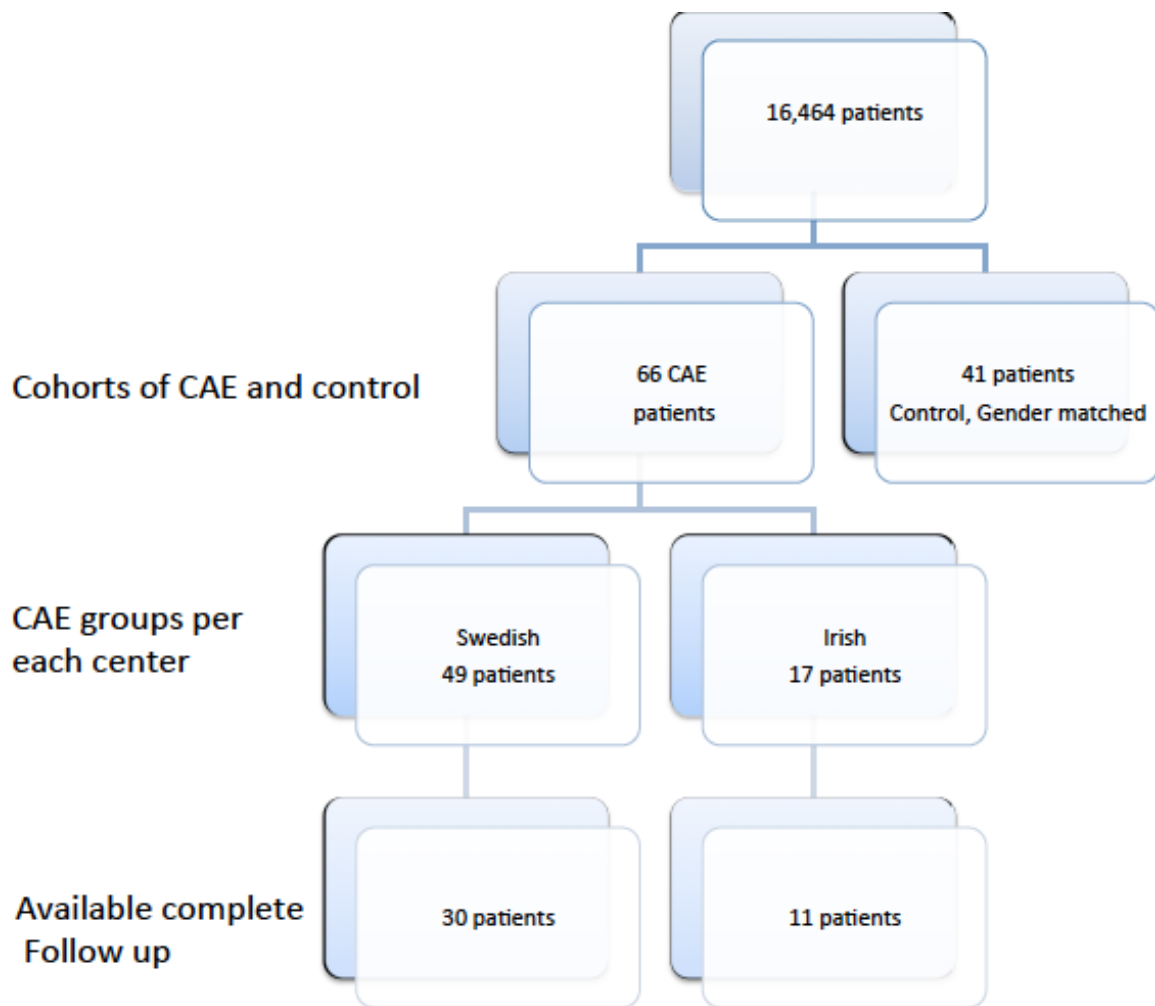
	<b>CV Mortality (n=5, 12.2%)</b>	<b>Survival (n=36, 87.8 %)</b>	<b>P value</b>
<b>Age (years, median (IQR))</b>	68 (59-73)	72 (68-75)	0.16
<b>Gender (female,%)</b>	1 (20%)	10 (27.8 %)	0.59
<b>Risk Factors</b>			
<b>Hypertension (n,%)</b>	3 (60.0%)	19 (52.8%)	0.57
<b>Diabetes (n,%)</b>	1 (20.0%)	6 (15.4%)	0.63
<b>Smoking (n,%)</b>	5 (100%)	25 (69.4%)	0.19
<b>Dyslipidemia (n,%)</b>	5 (100%)	22 (61.1%)	0.11
<b>Family history for CAD (n,%)</b>	2 (40.0%)	20 (55.6%)	0.40

**Table S2** Comparison between CAE patients with versus without MACE

	<b>MACE (n 18, 43.9%)</b>	<b>No MACE* (n=23, 56.1%)</b>	<b>P value</b>
<b>Age (years, median (IQR))</b>	70 (64-75)	65 (58-72)	0.09
<b>Gender (female,%)</b>	8 (44.4%)	3 (13.0 %)	<b>0.03</b>
<b>Risk Factors</b>			
<b>Hypertension (n,%)</b>	12 (66.7%)	10 (45.5%)	0.12
<b>Diabetes (n,%)</b>	4 (22.2%)	3 (13.0 %)	0.36
<b>Smoking (n,%)</b>	15 (83.3%)	15 (65.2%)	0.17
<b>Dyslipidemia (n,%)</b>	11 (61.1 %)	16 (69.6%)	0.41
<b>Family history for CAD (n,%)</b>	6 (33.3 %)	16 (69.6%)	<b>0.03</b>

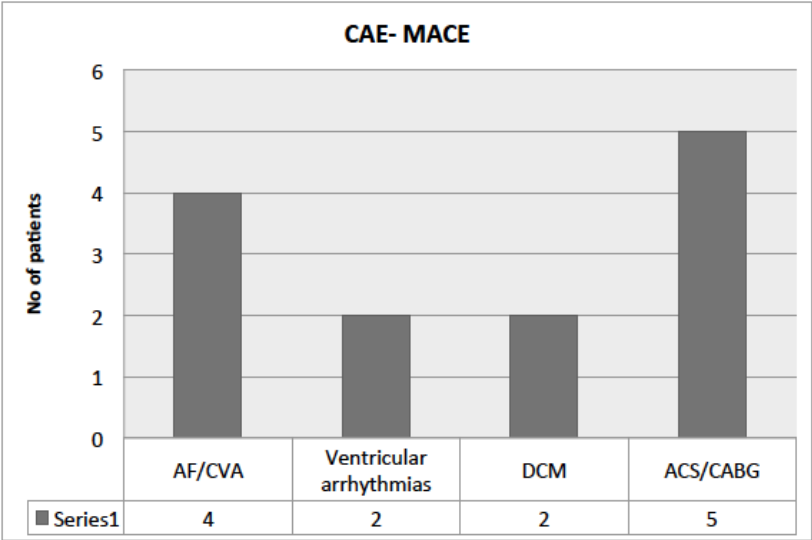
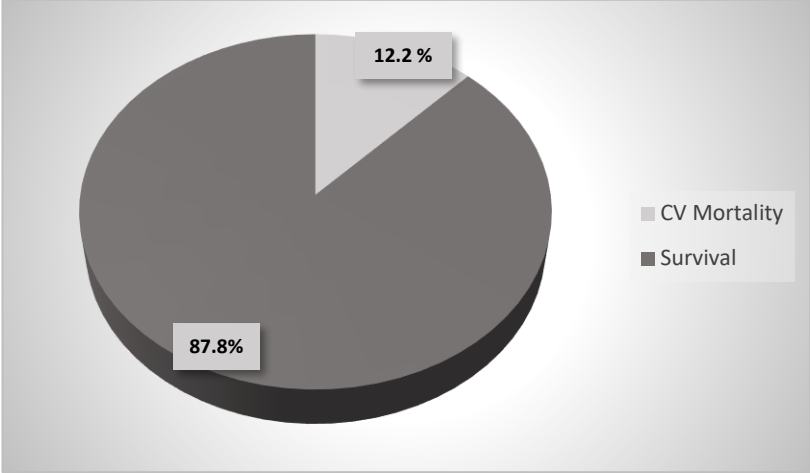
\* MACE (major acute cardiac events)

**Figure S1** This figure summarizes patients' selection and follow-up data of CAE patients



**Figure S2** Overall cardiovascular mortality (2A) and MACE according to presentations in CAE patients (2B)

2A



2B

AF (atrial fibrillation), CVA (cerebrovascular events), DCM (dilated cardiomyopathy), ACS (acute coronary syndrome), CABG (coronary artery bypass graft), and MACE (major acute cardiac events)